

Datasheet for ABIN2787164
anti-RAP1 antibody (Middle Region)[Go to Product page](#)

2 Images

Overview

Quantity:	100 µL
Target:	RAP1 (TERF2IP)
Binding Specificity:	Middle Region
Reactivity:	Human, Mouse, Rat, Dog, Cow, Guinea Pig, Horse, Rabbit, Pig, Zebrafish (Danio rerio)
Host:	Rabbit
Clonality:	Polyclonal
Conjugate:	This RAP1 antibody is un-conjugated
Application:	Western Blotting (WB)

Product Details

Immunogen:	The immunogen is a synthetic peptide directed towards the middle region of human TERF2IP
Sequence:	EDPEAADSGE PQNKRTPLDLP EEEYVKKEIQ ENEEAVKKML VEATREFEEV
Predicted Reactivity:	Cow: 100%, Dog: 100%, Guinea Pig: 93%, Horse: 100%, Human: 100%, Mouse: 100%, Pig: 100%, Rabbit: 93%, Rat: 100%, Zebrafish: 83%
Characteristics:	This is a rabbit polyclonal antibody against TERF2IP. It was validated on Western Blot using a cell lysate as a positive control.
Purification:	Affinity Purified

Target Details

Target:	RAP1 (TERF2IP)
---------	----------------

Target Details

Alternative Name:	TERF2IP (TERF2IP Products)
Background:	<p>The gene encodes a protein that is part of a complex involved in telomere length regulation. Pseudogenes are present on chromosomes 5 and 22.</p> <p>Alias Symbols: DRIP5, RAP1</p> <p>Protein Interaction Partner: TERF2, UBC, ANXA8L1, WDR92, PANK4, PPP2R5E, RIF1, RAD50, NBN, MRE11A, SLX4, TFAP4, LANCL2, ENAH, PPP6R3, MAGOHB, BANP, RPP25, EPS8L1, C9orf78, SCLY, MRT04, SBDS, HDGFRP3, PACSIN3, LGALSL, BABAM1, DBNL, GPKOW, GNMT, WIP12, TOR1AIP1, RPAP1, CHMP2B, PGLS, HA</p> <p>Protein Size: 399</p>
Molecular Weight:	44 kDa
Gene ID:	54386
NCBI Accession:	NM_018975 , NP_061848
UniProt:	Q9NYB0
Pathways:	Cell Division Cycle , Telomere Maintenance

Application Details

Application Notes:	Optimal working dilutions should be determined experimentally by the investigator.
Comment:	Antigen size: 399 AA
Restrictions:	For Research Use only

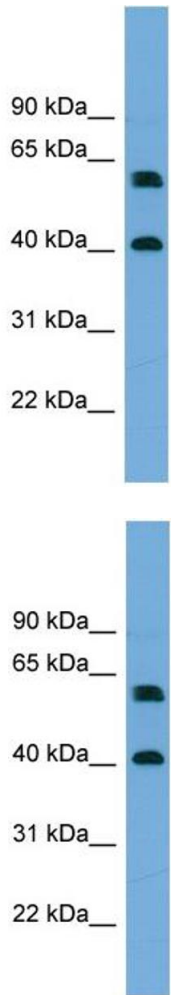
Handling

Format:	Liquid
Concentration:	Lot specific
Buffer:	Liquid. Purified antibody supplied in 1x PBS buffer with 0.09 % (w/v) sodium azide and 2 % sucrose.
Preservative:	Sodium azide
Precaution of Use:	This product contains Sodium azide: a POISONOUS AND HAZARDOUS SUBSTANCE which should be handled by trained staff only.
Handling Advice:	Avoid repeated freeze-thaw cycles.
Storage:	-20 °C

Handling

Storage Comment: For short term use, store at 2-8°C up to 1 week. For long term storage, store at -20°C in small aliquots to prevent freeze-thaw cycles.

Images



Western Blotting

Image 1. WB Suggested Anti-TERF2IP Antibody Titration:

0.2-1 ug/ml

Positive Control: MCF7 cell lysate

Western Blotting

Image 2. WB Suggested Anti-TERF2IP

Antibody Titration: 0.2-1 µg/mL

Positive Control: MCF7 cell lysate

TERF2IP is supported by BioGPS gene expression data to be expressed in MCF7