



[Go to Product page](#)

Datasheet for ABIN2787167
anti-SASH3 antibody (C-Term)

2 Images

Overview

Quantity:	100 µL
Target:	SASH3
Binding Specificity:	C-Term
Reactivity:	Human, Mouse, Dog, Guinea Pig, Horse, Rabbit, Cow, Rat
Host:	Rabbit
Clonality:	Polyclonal
Conjugate:	This SASH3 antibody is un-conjugated
Application:	Western Blotting (WB)

Product Details

Immunogen:	The immunogen is a synthetic peptide directed towards the C terminal region of human CXorf9
Sequence:	RPSRRQSKGK RPKPKTLHEL LERIGLEEHT STLLLNQYQT LEDFKELRET
Predicted Reactivity:	Cow: 100%, Dog: 100%, Guinea Pig: 100%, Horse: 100%, Human: 100%, Mouse: 100%, Rabbit: 100%, Rat: 100%
Characteristics:	This is a rabbit polyclonal antibody against CXorf9. It was validated on Western Blot.
Purification:	Affinity Purified

Target Details

Target:	SASH3
Alternative Name:	CXorf9 (SASH3 Products)

Target Details

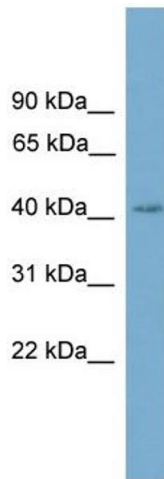
Background:	The function of this protein remains unknown. Alias Symbols: 753P9, CXorf9, HAC2, SH3D6C, SLY Protein Interaction Partner: UBC, APP, SMURF1, BMPR1B, SMAD7, SMAD4, Protein Size: 380
Molecular Weight:	41 kDa
Gene ID:	54440
NCBI Accession:	NM_018990 , NP_061863
UniProt:	O75995
Pathways:	Regulation of Leukocyte Mediated Immunity , Positive Regulation of Immune Effector Process , Production of Molecular Mediator of Immune Response

Application Details

Application Notes:	Optimal working dilutions should be determined experimentally by the investigator.
Comment:	Antigen size: 380 AA
Restrictions:	For Research Use only

Handling

Format:	Liquid
Concentration:	Lot specific
Buffer:	Liquid. Purified antibody supplied in 1x PBS buffer with 0.09 % (w/v) sodium azide and 2 % sucrose.
Preservative:	Sodium azide
Precaution of Use:	This product contains Sodium azide: a POISONOUS AND HAZARDOUS SUBSTANCE which should be handled by trained staff only.
Handling Advice:	Avoid repeated freeze-thaw cycles.
Storage:	-20 °C
Storage Comment:	For short term use, store at 2-8°C up to 1 week. For long term storage, store at -20°C in small aliquots to prevent freeze-thaw cycles.



Western Blotting

Image 1. WB Suggested Anti-CXorf9 Antibody Titration:

0.2-1 ug/ml

ELISA Titer: 1:62500

Positive Control: Hela cell lysate



Rabbit Anti-CXorf9 Antibody
Catalog Number: ARP57306
Lot Number: QC28248
Lane: Hela Cell Lysate

Antibody Titration: 1.0µg/ml
Gel Concentration: 12%

Western Blotting

Image 2. WB Suggested Anti-CXorf9

Antibody Titration: 0.2-1 µg/mL ELISA Titer: 1:2500

Positive Control: Hela cell lysate