

Datasheet for ABIN2787171
anti-EXOC6 antibody (N-Term)[Go to Product page](#)

2 Images

Overview

Quantity:	100 µL
Target:	EXOC6
Binding Specificity:	N-Term
Reactivity:	Human, Mouse, Rat, Cow, Dog, Guinea Pig, Rabbit, Zebrafish (Danio rerio)
Host:	Rabbit
Clonality:	Polyclonal
Conjugate:	This EXOC6 antibody is un-conjugated
Application:	Western Blotting (WB)

Product Details

Immunogen:	The immunogen is a synthetic peptide directed towards the N terminal region of human EXOC6
Sequence:	MLEEETDQTY ENVLAIEQSF ELPVEATLRS VYDDQPNAHK KFMEKLDACI
Predicted Reactivity:	Cow: 100%, Dog: 100%, Guinea Pig: 100%, Human: 100%, Mouse: 100%, Rabbit: 100%, Rat: 100%, Zebrafish: 93%
Characteristics:	This is a rabbit polyclonal antibody against EXOC6. It was validated on Western Blot using a cell lysate as a positive control.
Purification:	Affinity Purified

Target Details

Target:	EXOC6
---------	-------

Target Details

Alternative Name:	EXOC6 (EXOC6 Products)
Background:	<p>The product of this gene belongs to the SEC15 family. It is highly similar to the protein encoded by <i>Saccharomyces cerevisiae</i> SEC15 gene. This protein is essential for vesicular traffic from the Golgi apparatus to the cell surface in yeast. It is one of the components of a multiprotein complex required for exocytosis. Alternatively spliced transcript variants encoding different isoforms have been identified.</p> <p>Alias Symbols: DKFZp761I2124, EXOC6A, FLJ1125, FLJ11251, MGC33397, SEC15L, SEC15L1, SEC15L3, Sec15p, SEC15</p> <p>Protein Interaction Partner: EGFR, UBC, ALB, RNF32, LOXL4, EXOC2, EXOC6, ECSIT, EXOSC1, MAST1, EXOC3, PRDX2, PSEN2, NOS3, GCDH, CYP2C8, APP, MYO5A,</p> <p>Protein Size: 799</p>
Molecular Weight:	88 kDa
Gene ID:	54536
NCBI Accession:	NM_001013848 , NP_001013870
UniProt:	B3KXY5
Pathways:	Peptide Hormone Metabolism , Synaptic Vesicle Exocytosis

Application Details

Application Notes:	Optimal working dilutions should be determined experimentally by the investigator.
Comment:	Antigen size: 799 AA
Restrictions:	For Research Use only

Handling

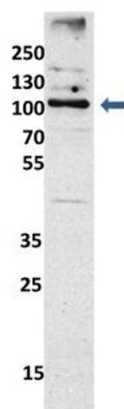
Format:	Liquid
Concentration:	Lot specific
Buffer:	Liquid. Purified antibody supplied in 1x PBS buffer with 0.09 % (w/v) sodium azide and 2 % sucrose.
Preservative:	Sodium azide
Precaution of Use:	This product contains Sodium azide: a POISONOUS AND HAZARDOUS SUBSTANCE which should be handled by trained staff only.

Handling

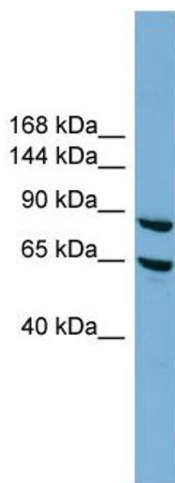
Handling Advice:	Avoid repeated freeze-thaw cycles.
Storage:	-20 °C
Storage Comment:	For short term use, store at 2-8°C up to 1 week. For long term storage, store at -20°C in small aliquots to prevent freeze-thaw cycles.

Images

EXOC6



See Immunoblot 2 Data for more information.



Western Blotting

Image 1. Sample Type: mouse fibroblast lysate (20ug)
Primary Dilution: 1:1000 (2% milk)
Secondary Dilution: 1:2000 (5% milk)
Image Submitted By:
Anonymous researcher

Western Blotting

Image 2. WB Suggested Anti-EXOC6 Antibody Titration:
0.2-1 ug/ml
Positive Control: HepG2 cell lysate