

Datasheet for ABIN2787175
anti-CCDC76 antibody (N-Term)[Go to Product page](#)

2 Images

Overview

| | |
|----------------------|---|
| Quantity: | 100 µL |
| Target: | CCDC76 |
| Binding Specificity: | N-Term |
| Reactivity: | Human, Mouse, Horse, Rat, Rabbit, Cow, Guinea Pig |
| Host: | Rabbit |
| Clonality: | Polyclonal |
| Conjugate: | This CCDC76 antibody is un-conjugated |
| Application: | Western Blotting (WB) |

Product Details

| | |
|-----------------------|---|
| Immunogen: | The immunogen is a synthetic peptide directed towards the N terminal region of human CCDC76 |
| Sequence: | QLAKHLKKCN SREKPKPDFY IQDINAGLRD ETEIPEQLVP ISSLSEEQLE |
| Predicted Reactivity: | Cow: 92%, Guinea Pig: 92%, Horse: 92%, Human: 100%, Mouse: 92%, Rabbit: 85%, Rat: 92% |
| Characteristics: | This is a rabbit polyclonal antibody against CCDC76. It was validated on Western Blot. |
| Purification: | Affinity Purified |

Target Details

| | |
|-------------------|--|
| Target: | CCDC76 |
| Alternative Name: | CCDC76 (CCDC76 Products) |

Target Details

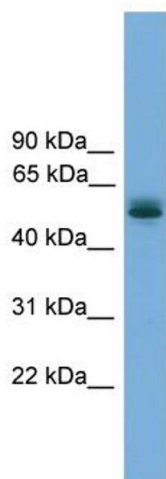
| | |
|-------------------|--|
| Background: | CCDC76 specifically methylates guanosine-4 in various tRNAs with a Gly(CCG), His or Pro signature. Alias Symbols: FLJ10287, FLJ11219, CCDC76 Protein Interaction Partner: ELAVL1, E2F1, E2F4, Protein Size: 481 |
| Molecular Weight: | 54 kDa |
| Gene ID: | 54482 |
| NCBI Accession: | NM_019083 , NP_061956 |
| UniProt: | Q9NUP7 |

Application Details

| | |
|--------------------|--|
| Application Notes: | Optimal working dilutions should be determined experimentally by the investigator. |
| Comment: | Antigen size: 481 AA |
| Restrictions: | For Research Use only |

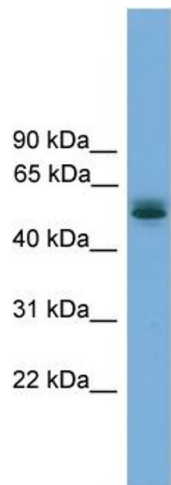
Handling

| | |
|--------------------|---|
| Format: | Liquid |
| Concentration: | Lot specific |
| Buffer: | Liquid. Purified antibody supplied in 1x PBS buffer with 0.09 % (w/v) sodium azide and 2 % sucrose. |
| Preservative: | Sodium azide |
| Precaution of Use: | This product contains Sodium azide: a POISONOUS AND HAZARDOUS SUBSTANCE which should be handled by trained staff only. |
| Handling Advice: | Avoid repeated freeze-thaw cycles. |
| Storage: | -20 °C |
| Storage Comment: | For short term use, store at 2-8°C up to 1 week. For long term storage, store at -20°C in small aliquots to prevent freeze-thaw cycles. |



Western Blotting

Image 1. WB Suggested Anti-CCDC76 Antibody Titration:
0.2-1 ug/ml
Positive Control: Human Lung



Rabbit Anti-CCDC76 Antibody
Catalog Number: ARP57327
Lot Number: QC29075
Lane: Fetal Lung Lysate

Antibody Titration: 1.0µg/ml
Gel Concentration: 12%

Western Blotting

Image 2. WB Suggested Anti-CCDC76
Antibody Titration: 0.2-1 µg/mL
Positive Control: Human Lung