

Datasheet for ABIN2787176  
**anti-Cyclin J antibody (N-Term)**[Go to Product page](#)

## 1 Image

## Overview

Quantity:	100 µL
Target:	Cyclin J (CCNJ)
Binding Specificity:	N-Term
Reactivity:	Human, Guinea Pig, Mouse, Rat, Cow, Dog, Horse, Rabbit, Zebrafish (Danio rerio)
Host:	Rabbit
Clonality:	Polyclonal
Conjugate:	This Cyclin J antibody is un-conjugated
Application:	Western Blotting (WB)

## Product Details

Immunogen:	The immunogen is a synthetic peptide directed towards the N terminal region of human CCNJ
Sequence:	FMDRYDISIQ QLHLVALSCL LLASKFEEKE DSVPKLEQLN SLGCMTNMNL
Predicted Reactivity:	Cow: 100%, Dog: 100%, Guinea Pig: 100%, Horse: 100%, Human: 100%, Mouse: 100%, Rabbit: 100%, Rat: 100%, Zebrafish: 93%
Characteristics:	This is a rabbit polyclonal antibody against CCNJ. It was validated on Western Blot using a cell lysate as a positive control.
Purification:	Affinity Purified

## Target Details

Target:	Cyclin J (CCNJ)
---------	-----------------

## Target Details

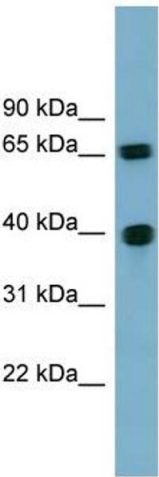
Alternative Name:	CCNJ ( <a href="#">CCNJ Products</a> )
Background:	The function of this protein remains unknown. Alias Symbols: bA690P14.1 Protein Interaction Partner: CDK2, ELAVL1, Protein Size: 372
Molecular Weight:	42 kDa
Gene ID:	54619
NCBI Accession:	<a href="#">NM_019084</a> , <a href="#">NP_061957</a>
UniProt:	<a href="#">Q5T5M9</a>

## Application Details

Application Notes:	Optimal working dilutions should be determined experimentally by the investigator.
Comment:	Antigen size: 372 AA
Restrictions:	For Research Use only

## Handling

Format:	Liquid
Concentration:	Lot specific
Buffer:	Liquid. Purified antibody supplied in 1x PBS buffer with 0.09 % (w/v) sodium azide and 2 % sucrose.
Preservative:	Sodium azide
Precaution of Use:	This product contains Sodium azide: a POISONOUS AND HAZARDOUS SUBSTANCE which should be handled by trained staff only.
Handling Advice:	Avoid repeated freeze-thaw cycles.
Storage:	-20 °C
Storage Comment:	For short term use, store at 2-8°C up to 1 week. For long term storage, store at -20°C in small aliquots to prevent freeze-thaw cycles.



Western Blotting

**Image 1. WB Suggested Anti-CCNJ Antibody Titration:**

0.2-1 ug/ml

**ELISA Titer:** 1:1562500

**Positive Control:** 721\_B cell lysate