

Datasheet for ABIN2787184
anti-FSTL5 antibody (Middle Region)



[Go to Product page](#)

1 Image

Overview

Quantity:	100 µL
Target:	FSTL5
Binding Specificity:	Middle Region
Reactivity:	Mouse, Human, Rat, Rabbit, Zebrafish (Danio rerio), Pig, Dog
Host:	Rabbit
Clonality:	Polyclonal
Conjugate:	This FSTL5 antibody is un-conjugated
Application:	Western Blotting (WB)

Product Details

Immunogen:	The immunogen is a synthetic peptide directed towards the middle region of human FSTL5
Sequence:	EAFDIYTNLH ISDLAFQPSF TEAHQYNIYG SSSTQTDVLF VELSSGKVKM
Predicted Reactivity:	Dog: 100%, Human: 100%, Mouse: 100%, Pig: 100%, Rabbit: 100%, Rat: 100%, Zebrafish: 79%
Characteristics:	This is a rabbit polyclonal antibody against FSTL5. It was validated on Western Blot using a cell lysate as a positive control.
Purification:	Affinity Purified

Target Details

Target:	FSTL5
Alternative Name:	FSTL5 (FSTL5 Products)

Target Details

Background: The function of this protein remains unknown.
Alias Symbols: DKFZp566D234, KIAA1263
Protein Size: 837

Molecular Weight: 92 kDa

Gene ID: 56884

NCBI Accession: [NM_001128428](#), [NP_001121900](#)

UniProt: [Q8N475](#)

Application Details

Application Notes: Optimal working dilutions should be determined experimentally by the investigator.

Comment: Antigen size: 837 AA

Restrictions: For Research Use only

Handling

Format: Liquid

Concentration: Lot specific

Buffer: Liquid. Purified antibody supplied in 1x PBS buffer with 0.09 % (w/v) sodium azide and 2 % sucrose.

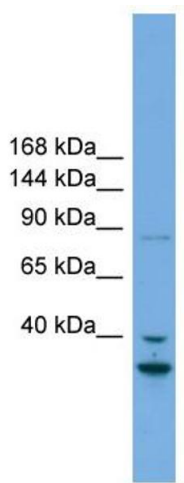
Preservative: Sodium azide

Precaution of Use: This product contains Sodium azide: a POISONOUS AND HAZARDOUS SUBSTANCE which should be handled by trained staff only.

Handling Advice: Avoid repeated freeze-thaw cycles.

Storage: -20 °C

Storage Comment: For short term use, store at 2-8°C up to 1 week. For long term storage, store at -20°C in small aliquots to prevent freeze-thaw cycles.



Western Blotting

Image 1. WB Suggested Anti-FSTL5 Antibody Titration:

0.2-1 ug/ml

Positive Control: Human heart