

Datasheet for ABIN2787189
anti-BDH2 antibody (Middle Region)[Go to Product page](#)

1 Image

Overview

Quantity:	100 µL
Target:	BDH2
Binding Specificity:	Middle Region
Reactivity:	Human, Mouse, Rat, Cow, Horse, Pig, Rabbit, Guinea Pig, Zebrafish (Danio rerio)
Host:	Rabbit
Clonality:	Polyclonal
Conjugate:	This BDH2 antibody is un-conjugated
Application:	Western Blotting (WB)

Product Details

Immunogen:	The immunogen is a synthetic peptide directed towards the middle region of human BDH2
Sequence:	NRCVYSTTKA AVIGLTKSVA ADFIQQGIRC NCVCPGTVDVDT PSLQERIQR
Predicted Reactivity:	Cow: 100%, Guinea Pig: 93%, Horse: 100%, Human: 100%, Mouse: 100%, Pig: 100%, Rabbit: 100%, Rat: 100%, Zebrafish: 93%
Characteristics:	This is a rabbit polyclonal antibody against BDH2. It was validated on Western Blot using a cell lysate as a positive control.
Purification:	Affinity Purified

Target Details

Target:	BDH2
---------	------

Target Details

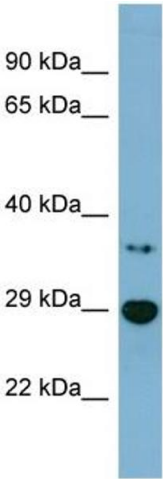
Alternative Name:	BDH2 (BDH2 Products)
Background:	<p>The function of this protein remains unknown.</p> <p>Alias Symbols: DHRS6, EFA6R, FLJ13261, PRO20933, UCPA-OR, UNQ6308, SDR15C1</p> <p>Protein Interaction Partner: BDH2, UBC, SNCA,</p> <p>Protein Size: 245</p>
Molecular Weight:	27 kDa
Gene ID:	56898
NCBI Accession:	NM_020139 , NP_064524
UniProt:	Q9BUT1
Pathways:	Transition Metal Ion Homeostasis , Monocarboxylic Acid Catabolic Process

Application Details

Application Notes:	Optimal working dilutions should be determined experimentally by the investigator.
Comment:	Antigen size: 245 AA
Restrictions:	For Research Use only

Handling

Format:	Liquid
Concentration:	Lot specific
Buffer:	Liquid. Purified antibody supplied in 1x PBS buffer with 0.09 % (w/v) sodium azide and 2 % sucrose.
Preservative:	Sodium azide
Precaution of Use:	This product contains Sodium azide: a POISONOUS AND HAZARDOUS SUBSTANCE which should be handled by trained staff only.
Handling Advice:	Avoid repeated freeze-thaw cycles.
Storage:	-20 °C
Storage Comment:	For short term use, store at 2-8°C up to 1 week. For long term storage, store at -20°C in small aliquots to prevent freeze-thaw cycles.



Western Blotting

Image 1. WB Suggested Anti-BDH2 Antibody Titration:
0.2-1 ug/ml

Positive Control: Jurkat cell lysate