

Datasheet for ABIN2787190
anti-FEM1C antibody (C-Term)[Go to Product page](#)

1 Image

Overview

Quantity:	100 µL
Target:	FEM1C
Binding Specificity:	C-Term
Reactivity:	Human, Mouse, Rat, Cow, Horse, Pig, Rabbit
Host:	Rabbit
Clonality:	Polyclonal
Conjugate:	This FEM1C antibody is un-conjugated
Application:	Western Blotting (WB)

Product Details

Immunogen:	The immunogen is a synthetic peptide directed towards the C-terminal region of Rat Fem1c
Sequence:	LHKQTASDLL DEKEIAKNLI QPINHTTLQC LAARVIVNHR IYYKGNPEK
Predicted Reactivity:	Cow: 100%, Horse: 100%, Human: 100%, Mouse: 100%, Pig: 100%, Rabbit: 100%, Rat: 100%
Characteristics:	This is a rabbit polyclonal antibody against Fem1c. It was validated on Western Blot.
Purification:	Affinity Purified

Target Details

Target:	FEM1C
Alternative Name:	Fem1c (FEM1C Products)
Background:	The function of this protein remains unknown.

Target Details

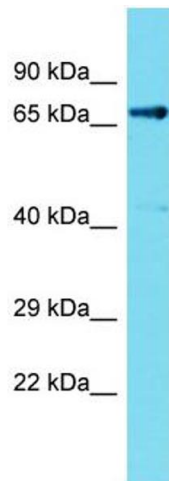
	Alias Symbols: -
	Protein Size: 617
Molecular Weight:	67 kDa
Gene ID:	302288
NCBI Accession:	NM_001106932 , NP_001100402
UniProt:	D3ZZR4

Application Details

Application Notes:	Optimal working dilutions should be determined experimentally by the investigator.
Comment:	Antigen size: 617 AA
Restrictions:	For Research Use only

Handling

Format:	Liquid
Concentration:	Lot specific
Buffer:	Liquid. Purified antibody supplied in 1x PBS buffer with 0.09 % (w/v) sodium azide and 2 % sucrose.
Preservative:	Sodium azide
Precaution of Use:	This product contains Sodium azide: a POISONOUS AND HAZARDOUS SUBSTANCE which should be handled by trained staff only.
Handling Advice:	Avoid repeated freeze-thaw cycles.
Storage:	-20 °C
Storage Comment:	For short term use, store at 2-8°C up to 1 week. For long term storage, store at -20°C in small aliquots to prevent freeze-thaw cycles.



Western Blotting

Image 1. Host: Rabbit
Target Name: Fem1c
Sample Tissue: Rat Kidney lysates
Antibody Dilution: 1.0 µg/mL