

Datasheet for ABIN2787195
anti-ADPRM antibody (N-Term)[Go to Product page](#)

1 Image

Overview

Quantity:	100 µL
Target:	ADPRM (C17orf48)
Binding Specificity:	N-Term
Reactivity:	Human, Horse
Host:	Rabbit
Clonality:	Polyclonal
Conjugate:	This ADPRM antibody is un-conjugated
Application:	Western Blotting (WB)

Product Details

Immunogen:	The immunogen is a synthetic peptide directed towards the N terminal region of human C17orf48
Sequence:	MDDKPNPEAL SDSSERLFSF GVIADVQFAD LEDGFNFQGT RRRYYRHSL
Predicted Reactivity:	Horse: 79%, Human: 100%
Characteristics:	This is a rabbit polyclonal antibody against C17orf48. It was validated on Western Blot using a cell lysate as a positive control.
Purification:	Affinity Purified

Target Details

Target:	ADPRM (C17orf48)
---------	------------------

Target Details

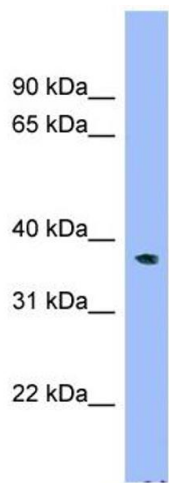
Alternative Name:	C17orf48 (C17orf48 Products)
Background:	The function of this protein remains unknown. Alias Symbols: MDS006, NBLA03831, C17orf48 Protein Interaction Partner: UBC, Protein Size: 342
Molecular Weight:	39 kDa
Gene ID:	56985
NCBI Accession:	NM_020233 , NP_064618
UniProt:	Q3LIE5

Application Details

Application Notes:	Optimal working dilutions should be determined experimentally by the investigator.
Comment:	Antigen size: 342 AA
Restrictions:	For Research Use only

Handling

Format:	Liquid
Concentration:	Lot specific
Buffer:	Liquid. Purified antibody supplied in 1x PBS buffer with 0.09 % (w/v) sodium azide and 2 % sucrose.
Preservative:	Sodium azide
Precaution of Use:	This product contains Sodium azide: a POISONOUS AND HAZARDOUS SUBSTANCE which should be handled by trained staff only.
Handling Advice:	Avoid repeated freeze-thaw cycles.
Storage:	-20 °C
Storage Comment:	For short term use, store at 2-8°C up to 1 week. For long term storage, store at -20°C in small aliquots to prevent freeze-thaw cycles.



Western Blotting				
Image	1.	WB	Suggested	Anti-C17orf48 Antibody
Titration: 0.2-1 ug/ml				
Positive Control: HepG2 cell lysate				