

Datasheet for ABIN2787196  
**anti-ADPRM antibody (Middle Region)**[Go to Product page](#)

## 1 Image

## Overview

Quantity:	100 µL
Target:	ADPRM (C17orf48)
Binding Specificity:	Middle Region
Reactivity:	Human, Mouse, Rat, Horse, Pig, Rabbit, Cow, Dog, Guinea Pig
Host:	Rabbit
Clonality:	Polyclonal
Conjugate:	This ADPRM antibody is un-conjugated
Application:	Western Blotting (WB)

## Product Details

Immunogen:	The immunogen is a synthetic peptide directed towards the middle region of human C17orf48
Sequence:	KYEQCMKILR EHNPNTELNS PQGLSEPQFV QFNGGFSQEQ LNWLNELVTF
Predicted Reactivity:	Cow: 100%, Dog: 93%, Guinea Pig: 86%, Horse: 100%, Human: 100%, Mouse: 93%, Pig: 93%, Rabbit: 93%, Rat: 93%
Characteristics:	This is a rabbit polyclonal antibody against C17orf48. It was validated on Western Blot using a cell lysate as a positive control.
Purification:	Affinity Purified

## Target Details

Target:	ADPRM (C17orf48)
---------	------------------

## Target Details

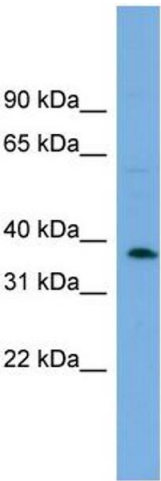
Alternative Name:	C17orf48 ( <a href="#">C17orf48 Products</a> )
Background:	The function of this protein remains unknown. Alias Symbols: MDS006, NBLA03831, C17orf48 Protein Interaction Partner: UBC, Protein Size: 342
Molecular Weight:	39 kDa
Gene ID:	56985
NCBI Accession:	<a href="#">NM_020233</a> , <a href="#">NP_064618</a>
UniProt:	<a href="#">Q3LIE5</a>

## Application Details

Application Notes:	Optimal working dilutions should be determined experimentally by the investigator.
Comment:	Antigen size: 342 AA
Restrictions:	For Research Use only

## Handling

Format:	Liquid
Concentration:	Lot specific
Buffer:	Liquid. Purified antibody supplied in 1x PBS buffer with 0.09 % (w/v) sodium azide and 2 % sucrose.
Preservative:	Sodium azide
Precaution of Use:	This product contains Sodium azide: a POISONOUS AND HAZARDOUS SUBSTANCE which should be handled by trained staff only.
Handling Advice:	Avoid repeated freeze-thaw cycles.
Storage:	-20 °C
Storage Comment:	For short term use, store at 2-8°C up to 1 week. For long term storage, store at -20°C in small aliquots to prevent freeze-thaw cycles.



**Western Blotting**

**Image 1.** WB Suggested Anti-C17orf48 Antibody Titration: 0.2-1 ug/ml ELISA Titer: 1:312500 Positive Control: NCI-H226 cell lysate ADPRM is supported by BioGPS gene expression data to be expressed in NCIH226