

Datasheet for ABIN2787202
anti-CASS4 antibody (N-Term)[Go to Product page](#)

1 Image

Overview

Quantity:	100 µL
Target:	CASS4
Binding Specificity:	N-Term
Reactivity:	Human, Mouse, Rabbit, Rat, Dog, Guinea Pig, Cow
Host:	Rabbit
Clonality:	Polyclonal
Conjugate:	This CASS4 antibody is un-conjugated
Application:	Western Blotting (WB)

Product Details

Immunogen:	The immunogen is a synthetic peptide directed towards the N-terminal region of Human CASS4
Sequence:	ALLARALYDN CPDCSDELAF SRGDILTILE QHVPESGWW KCLLHGRQGL
Predicted Reactivity:	Cow: 92%, Dog: 91%, Guinea Pig: 92%, Human: 100%, Mouse: 100%, Rabbit: 100%, Rat: 100%
Characteristics:	This is a rabbit polyclonal antibody against CASS4. It was validated on Western Blot.
Purification:	Affinity Purified

Target Details

Target:	CASS4
Alternative Name:	CASS4 (CASS4 Products)
Background:	CASS4 is a docking protein that plays a role in tyrosine kinase-based signaling related to cell

Target Details

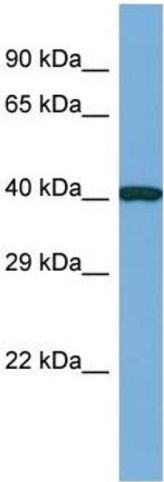
	adhesion and cell spreading. It regulates PTK2/FAK1 activity, focal adhesion integrity, and cell spreading. Protein Interaction Partner: CRK, Protein Size: 349
Molecular Weight:	38 kDa
Gene ID:	57091

Application Details

Restrictions:	For Research Use only
---------------	-----------------------

Handling

Format:	Liquid
Concentration:	1 mg/mL
Buffer:	Liquid. Purified antibody supplied in 1x PBS buffer with 0.09 % (w/v) sodium azide and 2 % sucrose.
Preservative:	Sodium azide
Precaution of Use:	This product contains Sodium azide: a POISONOUS AND HAZARDOUS SUBSTANCE which should be handled by trained staff only.
Handling Advice:	Avoid repeat freeze-thaw cycles.
Storage:	-20 °C
Storage Comment:	For short term use, store at 2-8°C up to 1 week. For long term storage, store at -20°C in small aliquots to prevent freeze-thaw cycles.



Western Blotting

Image 1. Host: Rabbit Target Name: CASS4 Sample Type: RPMI-8226 Whole Cell lysates Antibody Dilution: 1.0ug/ml
CASS4 is supported by BioGPS gene expression data to be expressed in RPMI 8226