

Datasheet for ABIN2787206
anti-CPA6 antibody (Middle Region)[Go to Product page](#)

2 Images

Overview

Quantity:	100 µL
Target:	CPA6
Binding Specificity:	Middle Region
Reactivity:	Human, Mouse, Rat, Zebrafish (Danio rerio), Guinea Pig, Rabbit, Cow, Dog, Horse
Host:	Rabbit
Clonality:	Polyclonal
Conjugate:	This CPA6 antibody is un-conjugated
Application:	Western Blotting (WB)

Product Details

Immunogen:	The immunogen is a synthetic peptide directed towards the middle region of human CPA6
Sequence:	QSVYGVRYRY GPASTTLYVS SGSSMDWAYK NGIPYAFAFE LRDTGYFGFL
Predicted Reactivity:	Cow: 93%, Dog: 93%, Guinea Pig: 100%, Horse: 93%, Human: 100%, Mouse: 100%, Rabbit: 93%, Rat: 100%, Zebrafish: 100%
Characteristics:	This is a rabbit polyclonal antibody against CPA6. It was validated on Western Blot.
Purification:	Affinity Purified

Target Details

Target:	CPA6
Alternative Name:	CPA6 (CPA6 Products)

Target Details

Background:	<p>The protein encoded by this gene belongs to the family of carboxypeptidases, which catalyze the release of C-terminal amino acid, and have functions ranging from digestion of food to selective biosynthesis of neuroendocrine peptides. Polymorphic variants and a reciprocal translocation t(6,8)(q26,q13) involving this gene, have been associated with Duane retraction syndrome.</p> <p>Alias Symbols: CPAH, ETL5, FEB11</p> <p>Protein Size: 437</p>
-------------	---

Molecular Weight:	51 kDa
-------------------	--------

Gene ID:	57094
----------	-------

NCBI Accession:	NM_020361 , NP_065094
-----------------	---

UniProt:	Q8N4T0
----------	------------------------

Application Details

Application Notes:	Optimal working dilutions should be determined experimentally by the investigator.
--------------------	--

Comment:	Antigen size: 437 AA
----------	----------------------

Restrictions:	For Research Use only
---------------	-----------------------

Handling

Format:	Liquid
---------	--------

Concentration:	Lot specific
----------------	--------------

Buffer:	Liquid. Purified antibody supplied in 1x PBS buffer with 0.09 % (w/v) sodium azide and 2 % sucrose.
---------	---

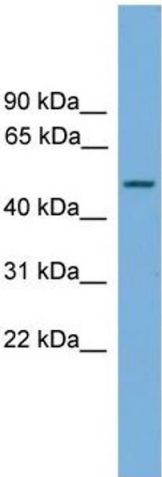
Preservative:	Sodium azide
---------------	--------------

Precaution of Use:	This product contains Sodium azide: a POISONOUS AND HAZARDOUS SUBSTANCE which should be handled by trained staff only.
--------------------	--

Handling Advice:	Avoid repeated freeze-thaw cycles.
------------------	------------------------------------

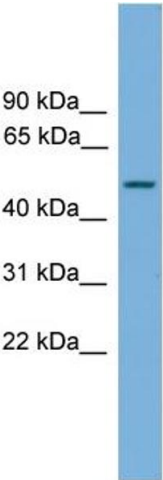
Storage:	-20 °C
----------	--------

Storage Comment:	For short term use, store at 2-8°C up to 1 week. For long term storage, store at -20°C in small aliquots to prevent freeze-thaw cycles.
------------------	---



Western Blotting

Image 1. WB Suggested Anti-CPA6 Antibody Titration:
0.2-1 ug/ml
ELISA Titer: 1:1562500
Positive Control: 721_B cell lysate



Rabbit Anti-CPA6 Antibody
Catalog Number: ARP57397
Lot Number: QC29641
Lane: 721_B Cell Lysate

Antibody Titration: 1.0µg/ml
Gel Concentration: 12%

Western Blotting

Image 2. WB Suggested Anti-CPA6
Antibody Titration: 0.2-1 µg/mL ELISA Titer: 1:1562500
Positive Control: 21_B cell lysate