



[Go to Product page](#)

Datasheet for ABIN2787208
anti-RAB25 antibody (Middle Region)

2 Images

Overview

Quantity:	100 µL
Target:	RAB25
Binding Specificity:	Middle Region
Reactivity:	Human, Mouse, Rat, Dog, Horse, Rabbit, Cow, Guinea Pig, Saccharomyces cerevisiae
Host:	Rabbit
Clonality:	Polyclonal
Conjugate:	This RAB25 antibody is un-conjugated
Application:	Western Blotting (WB)

Product Details

Immunogen:	The immunogen is a synthetic peptide directed towards the middle region of human RAB25
Sequence:	LKELYDHAEA TIVVMLVGNK SDLSQAREVP TEEARMFAEN NGLLFLETSA
Predicted Reactivity:	Cow: 93%, Dog: 93%, Guinea Pig: 93%, Horse: 100%, Human: 100%, Mouse: 100%, Rabbit: 100%, Rat: 100%, Yeast: 79%
Characteristics:	This is a rabbit polyclonal antibody against RAB25. It was validated on Western Blot.
Purification:	Affinity Purified

Target Details

Target:	RAB25
Alternative Name:	RAB25 (RAB25 Products)

Target Details

Background: RAB proteins, such as RAB25, are members of the RAS superfamily of small GTPases that are involved in membrane trafficking. Members of the RAB11 subfamily, including RAB25, control the return of internalized membrane-associated moieties to the cell surface (Caswell et al., 2007 [PubMed 17925226]).

Alias Symbols: CATX-8, RAB11C

Protein Interaction Partner: RAB11FIP5, OPTN, MYO5B, ATP4A, RAB11FIP2, UBC, RAB11FIP3, MED31, SMURF2, BMPR1B, SMAD4, TGFBR1, ACVR1, RAB11FIP1, PKIG, KPTN, AP2S1,

Protein Size: 213

Molecular Weight: 23 kDa

Gene ID: 57111

NCBI Accession: [NM_020387](#), [NP_065120](#)

UniProt: [P57735](#)

Application Details

Application Notes: Optimal working dilutions should be determined experimentally by the investigator.

Comment: Antigen size: 213 AA

Restrictions: For Research Use only

Handling

Format: Liquid

Concentration: Lot specific

Buffer: Liquid. Purified antibody supplied in 1x PBS buffer with 0.09 % (w/v) sodium azide and 2 % sucrose.

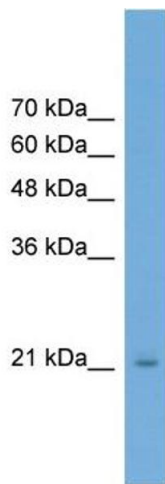
Preservative: Sodium azide

Precaution of Use: This product contains Sodium azide: a POISONOUS AND HAZARDOUS SUBSTANCE which should be handled by trained staff only.

Handling Advice: Avoid repeated freeze-thaw cycles.

Storage: -20 °C

Storage Comment: For short term use, store at 2-8°C up to 1 week. For long term storage, store at -20°C in small aliquots to prevent freeze-thaw cycles.



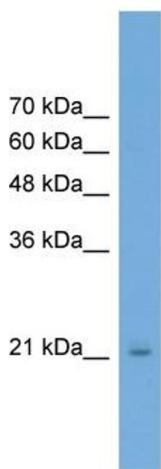
Western Blotting

Image 1. WB Suggested Anti-RAB25 Antibody Titration:

0.2-1 ug/ml

ELISA Titer: 1:312500

Positive Control: Transfected 293T



Rabbit Anti-RAB25 Antibody
Catalog Number: ARP57401
Lot Number: QC28340
Lane: Transfected 293T Cell Lysate

Antibody Titration: 1.0µg/ml
Gel Concentration: 12%

Western Blotting

Image 2. WB Suggested Anti-RAB25

Antibody Titration: 0.2-1 µg/mL ELISA Titer: 1:12500

Positive Control: Transfected 293T