

Datasheet for ABIN2787223

**anti-RAB22A antibody (Middle Region)**

3 Images

1 Publication

[Go to Product page](#)

## Overview

Quantity:	100 µL
Target:	RAB22A
Binding Specificity:	Middle Region
Reactivity:	Human, Mouse, Rat, Dog, Cow, Horse, Pig, Rabbit, Zebrafish (Danio rerio), Guinea Pig
Host:	Rabbit
Clonality:	Polyclonal
Conjugate:	This RAB22A antibody is un-conjugated
Application:	Western Blotting (WB), Immunohistochemistry (IHC)

## Product Details

Immunogen:	The immunogen is a synthetic peptide directed towards the middle region of human RAB22A
Sequence:	IFVETSAKNA ININELFIEI SRRIPSTDAN LPSGGKGFKL RRQPSEPKRS
Predicted Reactivity:	Cow: 100%, Dog: 100%, Guinea Pig: 93%, Horse: 100%, Human: 100%, Mouse: 100%, Pig: 100%, Rabbit: 100%, Rat: 100%, Zebrafish: 100%
Characteristics:	This is a rabbit polyclonal antibody against RAB22A. It was validated on Western Blot using a cell lysate as a positive control.
Purification:	Affinity Purified

## Target Details

Target:	RAB22A
---------	--------

## Target Details

Alternative Name:	RAB22A ( <a href="#">RAB22A Products</a> )
Background:	<p>The protein encoded by this gene is a member of the RAB family of small GTPases. The GTP-bound form of the encoded protein has been shown to interact with early-endosomal antigen 1, and may be involved in the trafficking of and interaction between endosome</p> <p>Alias Symbols: MGC16770</p> <p>Protein Interaction Partner: APPL2, UBC, ATP6V1B1, RBSN, RAB3GAP1, RABGEF1, RAB5A, ELAVL1, SMURF2, EEA1, RABAC1, RAB7A,</p> <p>Protein Size: 194</p>
Molecular Weight:	22 kDa
Gene ID:	57403
NCBI Accession:	<a href="#">NM_020673</a> , <a href="#">NP_065724</a>
UniProt:	<a href="#">P35285</a>

## Application Details

Application Notes:	Optimal working dilutions should be determined experimentally by the investigator.
Comment:	Antigen size: 194 AA
Restrictions:	For Research Use only

## Handling

Format:	Liquid
Concentration:	Lot specific
Buffer:	Liquid. Purified antibody supplied in 1x PBS buffer with 0.09 % (w/v) sodium azide and 2 % sucrose.
Preservative:	Sodium azide
Precaution of Use:	This product contains Sodium azide: a POISONOUS AND HAZARDOUS SUBSTANCE which should be handled by trained staff only.
Handling Advice:	Avoid repeated freeze-thaw cycles.
Storage:	-20 °C
Storage Comment:	For short term use, store at 2-8°C up to 1 week. For long term storage, store at -20°C in small aliquots to prevent freeze-thaw cycles.

Publications

Product cited in: Ewing, Chu, Elisma, Li, Taylor, Climie, McBroom-Cerajewski, Robinson, OConnor, Li, Taylor, Dharsee, Ho, Heilbut, Moore, Zhang, Ornatsky, Bukhman, Ethier, Sheng, Vasilescu, Abu-Farha, Lambert, Duewel et al.: "Large-scale mapping of human protein-protein interactions by mass spectrometry. ..." in: **Molecular systems biology**, Vol. 3, pp. 89, (2007) ([PubMed](#)).

Images



**Western Blotting**

**Image 1. WB Suggested Anti-RAB22A Antibody Titration:**  
0.2-1 ug/ml

**Positive Control:** MCF7 cell lysate

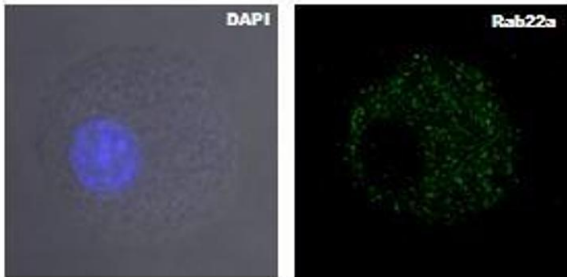
**Western Blotting**

**Image 2. WB Suggested Anti-RAB22A**  
Antibody Titration: 0.2-1 µg/mL

Positive Control: MCF7 cell lysate

RAB22A is strongly supported by BioGPS gene expression data to be expressed in Human MCF7 cells

RAB22A



Blue: Nucleus  
Green: Rab22a

Immunohistochemistry

**Image 3.** Lanes: Murin JAWS-II cells  
Primary Antibody Dilution: 1:1000  
Secondary Antibody: Anti-rabbit-FITC  
Secondary Antibody Dilution: 1:0500  
Gene Name: Blue: Nucleus Green: Rab22a

Submitted by: RAB22A