

Datasheet for ABIN2787225
anti-RIMKLB antibody (N-Term)[Go to Product page](#)

1 Image

Overview

Quantity:	100 µL
Target:	RIMKLB
Binding Specificity:	N-Term
Reactivity:	Human, Mouse, Rat, Cow, Dog, Guinea Pig, Horse, Rabbit, Pig
Host:	Rabbit
Clonality:	Polyclonal
Conjugate:	This RIMKLB antibody is un-conjugated
Application:	Western Blotting (WB)

Product Details

Immunogen:	The immunogen is a synthetic peptide directed towards the N-terminal region of Mouse Rimklb
Sequence:	FRAVVMDEMV LTVEQGNLGL RISGELISAY PQVVVVRVPT PWVQSDSDIT
Predicted Reactivity:	Cow: 93%, Dog: 100%, Guinea Pig: 93%, Horse: 100%, Human: 100%, Mouse: 86%, Pig: 100%, Rabbit: 100%, Rat: 93%
Characteristics:	This is a rabbit polyclonal antibody against Rimklb. It was validated on Western Blot.
Purification:	Affinity Purified

Target Details

Target:	RIMKLB
Alternative Name:	Rimklb (RIMKLB Products)

Target Details

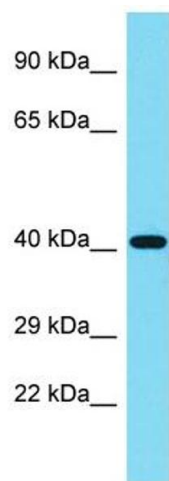
Background:	RimKlb catalyzes the synthesis of beta-citryl-glutamate and N-acetyl-aspartyl-glutamate. Beta-citryl-glutamate is synthesized more efficiently than N-acetyl-aspartyl-glutamate. Alias Symbols: 4931417E21Rik, 4933426K21Rik, AA097693, AI325948, AU015629, Naags Protein Size: 387
Molecular Weight:	42 kDa
Gene ID:	108653
NCBI Accession:	NM_027664 , NP_081940
UniProt:	Q80WS1

Application Details

Application Notes:	Optimal working dilutions should be determined experimentally by the investigator.
Comment:	Antigen size: 387 AA
Restrictions:	For Research Use only

Handling

Format:	Liquid
Concentration:	Lot specific
Buffer:	Liquid. Purified antibody supplied in 1x PBS buffer with 0.09 % (w/v) sodium azide and 2 % sucrose.
Preservative:	Sodium azide
Precaution of Use:	This product contains Sodium azide: a POISONOUS AND HAZARDOUS SUBSTANCE which should be handled by trained staff only.
Handling Advice:	Avoid repeated freeze-thaw cycles.
Storage:	-20 °C
Storage Comment:	For short term use, store at 2-8°C up to 1 week. For long term storage, store at -20°C in small aliquots to prevent freeze-thaw cycles.



Western Blotting

Image 1. Host: Rabbit
Target Name: Rimklb
Sample Tissue: Mouse Testis lysates
Antibody Dilution: 1.0 µg/mL