

Datasheet for ABIN2787228
anti-KCTD16 antibody (N-Term)



[Go to Product page](#)

1 Image

Overview

Quantity:	100 µL
Target:	KCTD16
Binding Specificity:	N-Term
Reactivity:	Human, Mouse, Rabbit, Rat, Cow, Guinea Pig, Horse, Dog
Host:	Rabbit
Clonality:	Polyclonal
Conjugate:	This KCTD16 antibody is un-conjugated
Application:	Western Blotting (WB)

Product Details

Immunogen:	The immunogen is a synthetic peptide directed towards the N terminal region of human KCTD16
Sequence:	KREAEIFQLP DLVKLLTPDE IKQSPDEFCH SDFEDASQGS DTRICPPSSL
Predicted Reactivity:	Cow: 100%, Dog: 93%, Guinea Pig: 79%, Horse: 100%, Human: 100%, Mouse: 100%, Rabbit: 100%, Rat: 100%
Characteristics:	This is a rabbit polyclonal antibody against KCTD16. It was validated on Western Blot using a cell lysate as a positive control.
Purification:	Affinity Purified

Target Details

Target:	KCTD16
---------	--------

Target Details

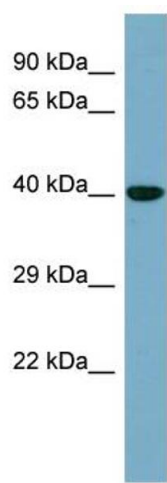
Alternative Name:	KCTD16 (KCTD16 Products)
Background:	The function of this protein remains unknown. Alias Symbols: DKFZp781A1155, KIAA1317, MGC138167 Protein Interaction Partner: UBC, Protein Size: 428
Molecular Weight:	49 kDa
Gene ID:	57528
NCBI Accession:	NM_020768 , NP_065819
UniProt:	Q68DU8
Pathways:	Synaptic Membrane , Regulation of G-Protein Coupled Receptor Protein Signaling

Application Details

Application Notes:	Optimal working dilutions should be determined experimentally by the investigator.
Comment:	Antigen size: 428 AA
Restrictions:	For Research Use only

Handling

Format:	Liquid
Concentration:	Lot specific
Buffer:	Liquid. Purified antibody supplied in 1x PBS buffer with 0.09 % (w/v) sodium azide and 2 % sucrose.
Preservative:	Sodium azide
Precaution of Use:	This product contains Sodium azide: a POISONOUS AND HAZARDOUS SUBSTANCE which should be handled by trained staff only.
Handling Advice:	Avoid repeated freeze-thaw cycles.
Storage:	-20 °C
Storage Comment:	For short term use, store at 2-8°C up to 1 week. For long term storage, store at -20°C in small aliquots to prevent freeze-thaw cycles.



Western Blotting

Image 1. WB Suggested Anti-KCTD16 Antibody Titration:

0.2-1 ug/ml

ELISA Titer: 1:1562500

Positive Control: HepG2 cell lysate