

## Datasheet for ABIN2787230 **anti-WDR35 antibody (N-Term)**



[Go to Product page](#)

### 1 Image

#### Overview

Quantity:	100 µL
Target:	WDR35
Binding Specificity:	N-Term
Reactivity:	Human, Mouse, Rabbit, Rat, Zebrafish (Danio rerio), Dog, Guinea Pig, Horse
Host:	Rabbit
Clonality:	Polyclonal
Conjugate:	This WDR35 antibody is un-conjugated
Application:	Western Blotting (WB)

#### Product Details

Immunogen:	The immunogen is a synthetic peptide directed towards the N terminal region of human WDR35
Sequence:	SGSVQVVTWN EQYQKLTSD ENGLIIVWML YKGSWIEEMI NNRNKSIVRS
Predicted Reactivity:	Dog: 93%, Guinea Pig: 93%, Horse: 93%, Human: 100%, Mouse: 93%, Rabbit: 93%, Rat: 93%, Zebrafish: 93%
Characteristics:	This is a rabbit polyclonal antibody against WDR35. It was validated on Western Blot using a cell lysate as a positive control.
Purification:	Affinity Purified

#### Target Details

Target:	WDR35
---------	-------

## Target Details

---

Alternative Name:	WDR35 ( <a href="#">WDR35 Products</a> )
Background:	<p>This gene encodes a member of the WD repeat protein family. WD repeats are minimally conserved regions of approximately 40 amino acids typically bracketed by gly-his and trp-asp (GH-WD), which may facilitate formation of heterotrimeric or multiprotein complexes. Members of this family are involved in a variety of cellular processes, including cell cycle progression, signal transduction, apoptosis, and gene regulation. Multiple alternatively spliced transcript variants encoding distinct isoforms have been found for this gene, but the biological validity of some variants has not been determined.</p> <p>Alias Symbols: KIAA1336, MGC33196, CED2</p> <p>Protein Interaction Partner: CUL3, UBC, ALYREF, BCL6,</p> <p>Protein Size: 1170</p>
Molecular Weight:	132 kDa
Gene ID:	57539
NCBI Accession:	<a href="#">NM_020779</a> , <a href="#">NP_065830</a>
Pathways:	<a href="#">Hedgehog Signaling</a>

## Application Details

---

Application Notes:	Optimal working dilutions should be determined experimentally by the investigator.
Comment:	Antigen size: 1170 AA
Restrictions:	For Research Use only

## Handling

---

Format:	Liquid
Concentration:	Lot specific
Buffer:	Liquid. Purified antibody supplied in 1x PBS buffer with 0.09 % (w/v) sodium azide and 2 % sucrose.
Preservative:	Sodium azide
Precaution of Use:	This product contains Sodium azide: a POISONOUS AND HAZARDOUS SUBSTANCE which should be handled by trained staff only.
Handling Advice:	Avoid repeated freeze-thaw cycles.

## Handling

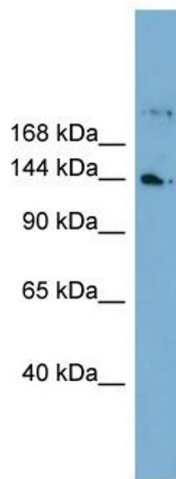
---

Storage: -20 °C

Storage Comment: For short term use, store at 2-8°C up to 1 week. For long term storage, store at -20°C in small aliquots to prevent freeze-thaw cycles.

## Images

---



### Western Blotting

#### Image 1. WB Suggested Anti-WDR35 Antibody Titration:

0.2-1 ug/ml

**Positive Control:** Human Lung