

Datasheet for ABIN2787232
anti-PDP2 antibody (Middle Region)[Go to Product page](#)

2 Images

Overview

Quantity:	100 µL
Target:	PDP2
Binding Specificity:	Middle Region
Reactivity:	Human, Mouse, Rat, Cow, Dog, Horse, Rabbit, Guinea Pig, Zebrafish (Danio rerio)
Host:	Rabbit
Clonality:	Polyclonal
Conjugate:	This PDP2 antibody is un-conjugated
Application:	Western Blotting (WB)

Product Details

Immunogen:	The immunogen is a synthetic peptide directed towards the middle region of human PDP2
Sequence:	LQRSILERGF NTEALNIYQF TPPHYTTPPY LTAEPEVITYH RLRPQDKFLV
Predicted Reactivity:	Cow: 100%, Dog: 100%, Guinea Pig: 92%, Horse: 92%, Human: 100%, Mouse: 100%, Rabbit: 92%, Rat: 92%, Zebrafish: 85%
Characteristics:	This is a rabbit polyclonal antibody against PDP2. It was validated on Western Blot.
Purification:	Affinity Purified

Target Details

Target:	PDP2
Alternative Name:	PDP2 (PDP2 Products)

Target Details

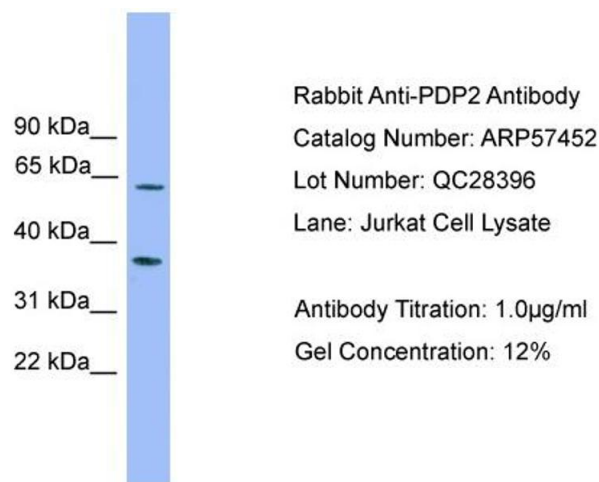
Background:	PDP2 catalyzes the dephosphorylation and concomitant reactivation of the alpha subunit of the E1 component of the pyruvate dehydrogenase complex. Alias Symbols: KIAA1348, PPM2C2 Protein Interaction Partner: UBC, PRKCD, Protein Size: 529
Molecular Weight:	60 kDa
Gene ID:	57546
NCBI Accession:	NM_020786 , NP_065837
UniProt:	Q9P2J9

Application Details

Application Notes:	Optimal working dilutions should be determined experimentally by the investigator.
Comment:	Antigen size: 529 AA
Restrictions:	For Research Use only

Handling

Format:	Liquid
Concentration:	Lot specific
Buffer:	Liquid. Purified antibody supplied in 1x PBS buffer with 0.09 % (w/v) sodium azide and 2 % sucrose.
Preservative:	Sodium azide
Precaution of Use:	This product contains Sodium azide: a POISONOUS AND HAZARDOUS SUBSTANCE which should be handled by trained staff only.
Handling Advice:	Avoid repeated freeze-thaw cycles.
Storage:	-20 °C
Storage Comment:	For short term use, store at 2-8°C up to 1 week. For long term storage, store at -20°C in small aliquots to prevent freeze-thaw cycles.

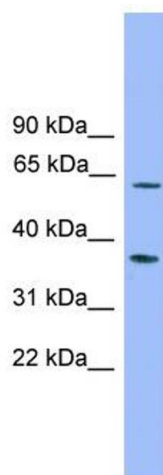


Western Blotting

Image 1. WB Suggested Anti-PDP2

Antibody Titration: 0.2-1 µg/mL ELISA Titer: 1:1562500

Positive Control: Jurkat cell lysate



Western Blotting

Image 2. WB Suggested Anti-PDP2 Antibody Titration: 0.2-1 µg/ml

ELISA Titer: 1:1562500

Positive Control: Jurkat cell lysate