

Datasheet for ABIN2787234
anti-IFT80 antibody (C-Term)[Go to Product page](#)

1 Image

Overview

Quantity:	100 µL
Target:	IFT80
Binding Specificity:	C-Term
Reactivity:	Human, Mouse, Rat, Cow, Dog, Pig, Horse, Rabbit
Host:	Rabbit
Clonality:	Polyclonal
Conjugate:	This IFT80 antibody is un-conjugated
Application:	Western Blotting (WB)

Product Details

Immunogen:	The immunogen is a synthetic peptide corresponding to a region of Mouse
Sequence:	PNTIYVDRDI LPKTLYERDA SEYSKNPHIV SFVGNQVTIR RADGSLVHIS
Predicted Reactivity:	Cow: 100%, Dog: 100%, Horse: 93%, Human: 100%, Mouse: 100%, Pig: 100%, Rabbit: 93%, Rat: 100%
Characteristics:	This is a rabbit polyclonal antibody against Ift80. It was validated on Western Blot.
Purification:	Affinity Purified

Target Details

Target:	IFT80
Alternative Name:	Ift80 (IFT80 Products)

Target Details

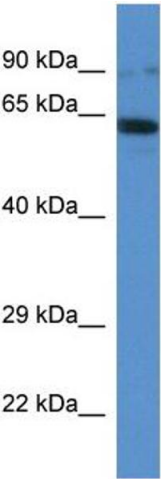
Background:	<p>Ift80 is a component of the intraflagellar transport (IFT) complex B, which is essential for the development and maintenance of motile and sensory cilia.</p> <p>Alias Symbols: 4921524P20Rik, Wdr56, mKIAA1374</p> <p>Protein Interaction Partner: Ift88,</p> <p>Protein Size: 777</p>
Molecular Weight:	85 kDa
Gene ID:	68259
NCBI Accession:	NM_026641 , NP_080917
UniProt:	Q8K057
Pathways:	Hedgehog Signaling

Application Details

Application Notes:	Optimal working dilutions should be determined experimentally by the investigator.
Comment:	Antigen size: 777 AA
Restrictions:	For Research Use only

Handling

Format:	Liquid
Concentration:	Lot specific
Buffer:	Liquid. Purified antibody supplied in 1x PBS buffer with 0.09 % (w/v) sodium azide and 2 % sucrose.
Preservative:	Sodium azide
Precaution of Use:	This product contains Sodium azide: a POISONOUS AND HAZARDOUS SUBSTANCE which should be handled by trained staff only.
Handling Advice:	Avoid repeated freeze-thaw cycles.
Storage:	-20 °C
Storage Comment:	For short term use, store at 2-8°C up to 1 week. For long term storage, store at -20°C in small aliquots to prevent freeze-thaw cycles.



Western Blotting

Image 1. WB Suggested Anti-Ift80 Antibody Titration: 1.0 ug/ml Positive Control: Mouse Spleen