



[Go to Product page](#)

Datasheet for ABIN2787236

anti-CFAP97/KIAA1430 antibody (Middle Region)

1 Image

Overview

Quantity:	100 µL
Target:	CFAP97/KIAA1430 (CFAP97)
Binding Specificity:	Middle Region
Reactivity:	Horse, Human, Cow, Dog, Guinea Pig, Mouse, Rabbit, Rat
Host:	Rabbit
Clonality:	Polyclonal
Conjugate:	This CFAP97/KIAA1430 antibody is un-conjugated
Application:	Western Blotting (WB)

Product Details

Immunogen:	The immunogen is a synthetic peptide directed towards the middle region of human KIAA1430
Sequence:	NMGYLNSSPL SRRARSTLGQ YSPLRASRTS SATSGLSCRS ERSAVDPSSG
Predicted Reactivity:	Cow: 80%, Dog: 93%, Guinea Pig: 93%, Horse: 100%, Human: 100%, Mouse: 87%, Rabbit: 93%, Rat: 93%
Characteristics:	This is a rabbit polyclonal antibody against KIAA1430. It was validated on Western Blot using a cell lysate as a positive control.
Purification:	Affinity Purified

Target Details

Target:	CFAP97/KIAA1430 (CFAP97)
---------	--------------------------

Target Details

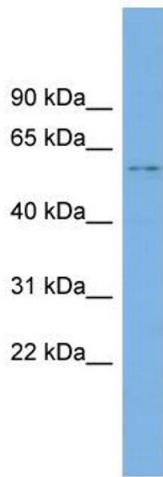
Alternative Name:	KIAA1430 (CFAP97 Products)
Background:	The function of this protein remains unknown. Alias Symbols: DKFZp434F1728, FLJ21225 Protein Interaction Partner: UBC, Cdc23, Anapc1, Protein Size: 532
Molecular Weight:	59 kDa
Gene ID:	57587
NCBI Accession:	NM_020827 , NP_065878
UniProt:	Q9P2B7

Application Details

Application Notes:	Optimal working dilutions should be determined experimentally by the investigator.
Comment:	Antigen size: 532 AA
Restrictions:	For Research Use only

Handling

Format:	Liquid
Concentration:	Lot specific
Buffer:	Liquid. Purified antibody supplied in 1x PBS buffer with 0.09 % (w/v) sodium azide and 2 % sucrose.
Preservative:	Sodium azide
Precaution of Use:	This product contains Sodium azide: a POISONOUS AND HAZARDOUS SUBSTANCE which should be handled by trained staff only.
Handling Advice:	Avoid repeated freeze-thaw cycles.
Storage:	-20 °C
Storage Comment:	For short term use, store at 2-8°C up to 1 week. For long term storage, store at -20°C in small aliquots to prevent freeze-thaw cycles.



Western Blotting

Image 1. WB Suggested Anti-KIAA1430 Antibody

Titration: 0.2-1 ug/ml

Positive Control: PANC1 cell lysate