

Datasheet for ABIN2787239
anti-CCDC146 antibody (Middle Region)[Go to Product page](#)

2 Images

Overview

Quantity:	100 µL
Target:	CCDC146
Binding Specificity:	Middle Region
Reactivity:	Human, Rat, Cow, Dog, Horse, Guinea Pig
Host:	Rabbit
Clonality:	Polyclonal
Conjugate:	This CCDC146 antibody is un-conjugated
Application:	Western Blotting (WB)

Product Details

Immunogen:	The immunogen is a synthetic peptide directed towards the middle region of human CCDC146
Sequence:	KEIEKEWLKV LRDEEMHALA IAEKSQEFLE ADNRQLPNGV YTTAEQRPNA
Predicted Reactivity:	Cow: 79%, Dog: 79%, Guinea Pig: 86%, Horse: 93%, Human: 100%, Rat: 79%
Characteristics:	This is a rabbit polyclonal antibody against CCDC146. It was validated on Western Blot.
Purification:	Affinity Purified

Target Details

Target:	CCDC146
Alternative Name:	CCDC146 (CCDC146 Products)
Background:	The function of this protein remains unknown.

Target Details

Alias Symbols: KIAA1505

Protein Interaction Partner: KRT18, GOLGA2, TRIM23, SPERT, KRT40, DTNBP1, USHBP1, TSC22D4, CEP44, CCDC136, RINT1, TRIM54, RPGRIP1, NECAB2, GMNN, MED4, TFIP11, NUP62, CCNDBP1, MTUS2, NINL, RNF40, PDE4DIP, PNMA1, KRT38, TRAF1, TPM3, TNFR, VPS52, PSMC6, MAGEA11, MAGEA6, KRT19, CEP170P1,

Protein Size: 955

Molecular Weight: 113 kDa

Gene ID: 57639

NCBI Accession: [NM_020879](#), [NP_065930](#)

UniProt: [Q8IYE0](#)

Application Details

Application Notes: Optimal working dilutions should be determined experimentally by the investigator.

Comment: Antigen size: 955 AA

Restrictions: For Research Use only

Handling

Format: Liquid

Concentration: Lot specific

Buffer: Liquid. Purified antibody supplied in 1x PBS buffer with 0.09 % (w/v) sodium azide and 2 % sucrose.

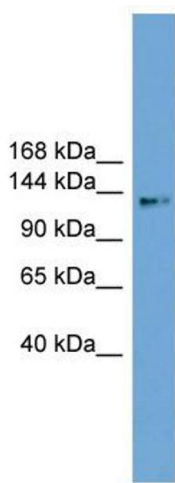
Preservative: Sodium azide

Precaution of Use: This product contains Sodium azide: a POISONOUS AND HAZARDOUS SUBSTANCE which should be handled by trained staff only.

Handling Advice: Avoid repeated freeze-thaw cycles.

Storage: -20 °C

Storage Comment: For short term use, store at 2-8°C up to 1 week. For long term storage, store at -20°C in small aliquots to prevent freeze-thaw cycles.

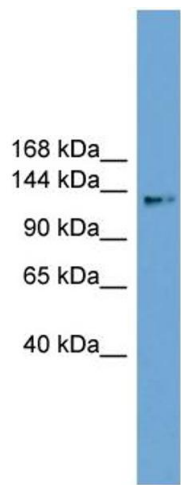


Western Blotting

Image 1. WB Suggested Anti-CCDC146 Antibody Titration:

0.2-1 ug/ml

Positive Control: 721_B cell lysate



Rabbit Anti-CCDC146 Antibody
Catalog Number: ARP57476
Lot Number: QC28424
Lane: 721_B Cell Lysate

Antibody Titration: 1.0µg/ml
Gel Concentration: 6-18%

Western Blotting

Image 2. WB Suggested Anti-CCDC146

Antibody Titration: 0.2-1 µg/mL

Positive Control: 21_B cell lysate