

Datasheet for ABIN2787245
anti-Copine V antibody (N-Term)

2 Images

[Go to Product page](#)

Overview

Quantity:	100 µL
Target:	Copine V (CPNE5)
Binding Specificity:	N-Term
Reactivity:	Human, Mouse, Rat, Cow, Dog, Pig, Rabbit, Zebrafish (Danio rerio)
Host:	Rabbit
Clonality:	Polyclonal
Conjugate:	This Copine V antibody is un-conjugated
Application:	Western Blotting (WB)

Product Details

Immunogen:	The immunogen is a synthetic peptide corresponding to a region of Mouse
Sequence:	SLSEFDSLAGE SIPATKVEIT VSCRNLLDKD MFSKSDPLCV MYTQGMENKQ
Predicted Reactivity:	Cow: 100%, Dog: 100%, Human: 100%, Mouse: 100%, Pig: 100%, Rabbit: 100%, Rat: 100%, Zebrafish: 77%
Characteristics:	This is a rabbit polyclonal antibody against Cpne5. It was validated on Western Blot.
Purification:	Affinity Purified

Target Details

Target:	Copine V (CPNE5)
Alternative Name:	Cpne5 (CPNE5 Products)

Target Details

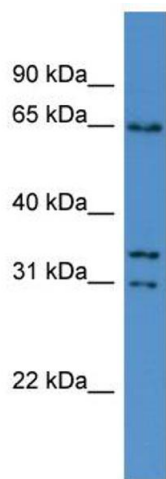
Background:	<p>Calcium-dependent membrane-binding proteins may regulate molecular events at the interface of the cell membrane and cytoplasm. This gene is one of several genes that encodes a calcium-dependent protein containing two N-terminal type II C2 domains and an integrin A domain-like sequence in the C-terminus.</p> <p>Alias Symbols: A830083G22Rik, MGC47475</p> <p>Protein Size: 593</p>
Molecular Weight:	65 kDa
Gene ID:	240058
NCBI Accession:	NM_153166 , NP_694806
UniProt:	Q8JZW4

Application Details

Application Notes:	Optimal working dilutions should be determined experimentally by the investigator.
Comment:	Antigen size: 593 AA
Restrictions:	For Research Use only

Handling

Format:	Liquid
Concentration:	Lot specific
Buffer:	Liquid. Purified antibody supplied in 1x PBS buffer with 0.09 % (w/v) sodium azide and 2 % sucrose.
Preservative:	Sodium azide
Precaution of Use:	This product contains Sodium azide: a POISONOUS AND HAZARDOUS SUBSTANCE which should be handled by trained staff only.
Handling Advice:	Avoid repeated freeze-thaw cycles.
Storage:	-20 °C
Storage Comment:	For short term use, store at 2-8°C up to 1 week. For long term storage, store at -20°C in small aliquots to prevent freeze-thaw cycles.



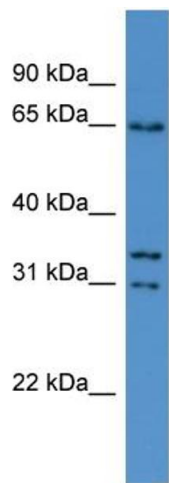
Western Blotting

Image 1. WB Suggested Anti-Cpne5 Antibody Titration:

0.2-1 ug/ml

ELISA Titer: 1:312500

Positive Control: Mouse Brain



Rabbit Anti-Cpne5 Antibody
Catalog Number: ARP57495
Lot Number: QC28458
Lane: Mouse Brain Lysate

Antibody Titration: 1.0µg/ml
Gel Concentration: 12%

Western Blotting

Image 2. WB Suggested Anti-Cpne5

Antibody Titration: 0.2-1 µg/mL ELISA Titer: 1::12500

Positive Control: Mouse Brain