

Datasheet for ABIN2787251
anti-BCL7A antibody (Middle Region)[Go to Product page](#)

3 Images

Overview

Quantity:	100 µL
Target:	BCL7A
Binding Specificity:	Middle Region
Reactivity:	Human, Mouse, Rat, Cow, Dog, Pig, Guinea Pig, Horse, Rabbit, Zebrafish (Danio rerio)
Host:	Rabbit
Clonality:	Polyclonal
Conjugate:	This BCL7A antibody is un-conjugated
Application:	Western Blotting (WB)

Product Details

Immunogen:	The immunogen is a synthetic peptide directed towards the middle region of human BCL7A
Sequence:	CGSEVTTPEN SSSPGMMDMH DDNSNQSSIA DASPIKQENS SNSSPAPEPN
Predicted Reactivity:	Cow: 100%, Dog: 100%, Guinea Pig: 86%, Horse: 100%, Human: 100%, Mouse: 100%, Pig: 100%, Rabbit: 100%, Rat: 100%, Zebrafish: 77%
Characteristics:	This is a rabbit polyclonal antibody against BCL7A. It was validated on Western Blot using a cell lysate as a positive control.
Purification:	Affinity Purified

Target Details

Target:	BCL7A
---------	-------

Target Details

Alternative Name:	BCL7A (BCL7A Products)
Background:	<p>This gene is directly involved, with Myc and IgH, in a three-way gene translocation in a Burkitt lymphoma cell line. As a result of the gene translocation, the N-terminal region of the gene product is disrupted, which is thought to be related to the pathogenesis of a subset of high-grade B cell non-Hodgkin lymphoma. The N-terminal segment involved in the translocation includes the region that shares a strong sequence similarity with those of BCL7B and BCL7C. Two transcript variants encoding different isoforms have been found for this gene.</p> <p>Alias Symbols: BCL7</p> <p>Protein Interaction Partner: ALAS1, UBC, CBX5, CUL3, Bcl7b, SMARCA4, SMARCA2, RELB,</p> <p>Protein Size: 231</p>
Molecular Weight:	25 kDa
Gene ID:	605
NCBI Accession:	NM_020993 , NP_066273
UniProt:	Q4VC05

Application Details

Application Notes:	Optimal working dilutions should be determined experimentally by the investigator.
Comment:	Antigen size: 231 AA
Restrictions:	For Research Use only

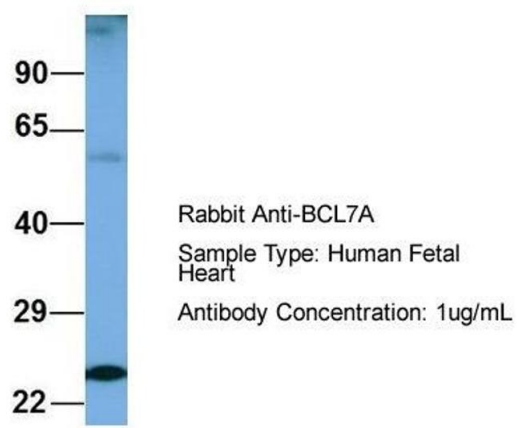
Handling

Format:	Liquid
Concentration:	Lot specific
Buffer:	Liquid. Purified antibody supplied in 1x PBS buffer with 0.09 % (w/v) sodium azide and 2 % sucrose.
Preservative:	Sodium azide
Precaution of Use:	This product contains Sodium azide: a POISONOUS AND HAZARDOUS SUBSTANCE which should be handled by trained staff only.
Handling Advice:	Avoid repeated freeze-thaw cycles.
Storage:	-20 °C

Storage Comment: For short term use, store at 2-8°C up to 1 week. For long term storage, store at -20°C in small aliquots to prevent freeze-thaw cycles.

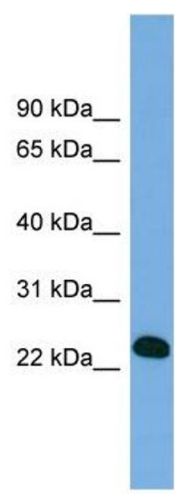
Images

BCL7A



Western Blotting

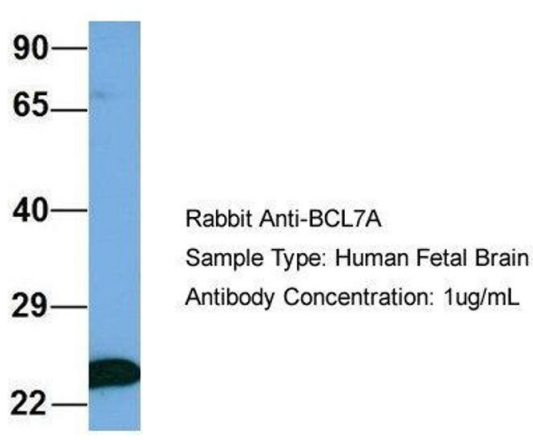
Image 1. Host: Rabbit
Target Name: BCL7A
Sample Tissue: Human Fetal Heart
Antibody Dilution: 1.0 µg/mL



Western Blotting

Image 2. WB Suggested Anti-BCL7A Antibody Titration:
0.2-1 µg/ml
ELISA Titer: 1:1562500
Positive Control: Human Lung

BCL7A



Western Blotting

Image 3. Host: Rabbit
Target Name: BCL7A
Sample Tissue: Human Fetal Brain
Antibody Dilution: 1.0 µg/mL