

Datasheet for ABIN2787256
anti-PLSCR1 antibody (N-Term)[Go to Product page](#)

2 Images

Overview

Quantity:	100 µL
Target:	PLSCR1
Binding Specificity:	N-Term
Reactivity:	Human, Dog, Rabbit
Host:	Rabbit
Clonality:	Polyclonal
Conjugate:	This PLSCR1 antibody is un-conjugated
Application:	Western Blotting (WB), Immunohistochemistry (IHC)

Product Details

Immunogen:	The immunogen is a synthetic peptide directed towards the N terminal region of human PLSCR1
Sequence:	MDKQNSQMNA SHPETNLPVG YPPQYPPTAF QGPPGYSGYP GPQVSYP PPPP
Predicted Reactivity:	Dog: 85%, Human: 100%, Rabbit: 77%
Characteristics:	This is a rabbit polyclonal antibody against PLSCR1. It was validated on Western Blot using a cell lysate as a positive control.
Purification:	Affinity Purified

Target Details

Target:	PLSCR1
---------	--------

Target Details

Alternative Name:	PLSCR1 (PLSCR1 Products)
Background:	<p>PLSCR1 may mediate accelerated ATP-independent bidirectional transbilayer migration of phospholipids upon binding calcium ions that results in a loss of phospholipid asymmetry in the plasma membrane. PLSCR1 may play a central role in the initiation of fibrin clot formation, in the activation of mast cells and in the recognition of apoptotic and injured cells by the reticuloendothelial system.</p> <p>Alias Symbols: MMTRA1B</p> <p>Protein Interaction Partner: PKD2, P2RY6, ILF3, EWSR1, ESR2, DOCK2, CTSZ, CATSPER1, LONRF1, KRTAP4-2, ZNF587, LINC01547, KRTAP9-2, GPD5, SCNM1, DMRT3, VPS37C, PRR13, DEF6, LGALS9C, KRTAP4-11, KRTAP5-6, KRTAP10-3, KRTAP10-11, KRTAP10-9, LCE3C, LCE2D, TRIM42, BCL6B, LCE4A, ZNF417, MGA</p> <p>Protein Size: 318</p>
Molecular Weight:	35 kDa
Gene ID:	5359
NCBI Accession:	NM_021105 , NP_066928
UniProt:	O15162
Pathways:	Cellular Response to Molecule of Bacterial Origin

Application Details

Application Notes:	Optimal working dilutions should be determined experimentally by the investigator.
Comment:	Antigen size: 318 AA
Restrictions:	For Research Use only

Handling

Format:	Liquid
Concentration:	Lot specific
Buffer:	Liquid. Purified antibody supplied in 1x PBS buffer with 0.09 % (w/v) sodium azide and 2 % sucrose.
Preservative:	Sodium azide
Precaution of Use:	This product contains Sodium azide: a POISONOUS AND HAZARDOUS SUBSTANCE which should be handled by trained staff only.

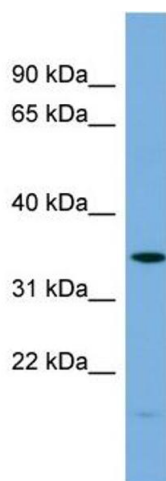
Handling

Handling Advice: Avoid repeated freeze-thaw cycles.

Storage: -20 °C

Storage Comment: For short term use, store at 2-8°C up to 1 week. For long term storage, store at -20°C in small aliquots to prevent freeze-thaw cycles.

Images



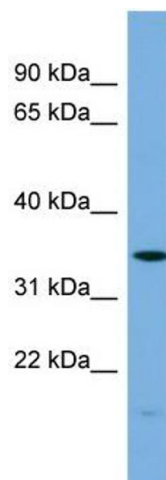
Western Blotting

Image 1. WB Suggested Anti-PLSCR1 Antibody Titration:

0.2-1 ug/ml

ELISA Titer: 1:312500

Positive Control: HT1080 cell lysate



Western Blotting

Image 2. WB Suggested Anti-PLSCR1

Antibody Titration: 0.2-1 µg/mL ELISA Titer: 1:12500

Positive Control: HT1080 cell lysate

PLSCR1 is supported by BioGPS gene expression data to be expressed in HT1080