

Datasheet for ABIN2787264
anti-MASA antibody (Middle Region)[Go to Product page](#)

2 Images

Overview

Quantity:	100 µL
Target:	MASA (ENOPH1)
Binding Specificity:	Middle Region
Reactivity:	Human, Mouse, Rat, Cow, Dog, Horse, Rabbit, Guinea Pig, Pig, Saccharomyces cerevisiae
Host:	Rabbit
Clonality:	Polyclonal
Conjugate:	This MASA antibody is un-conjugated
Application:	Western Blotting (WB)

Product Details

Immunogen:	The immunogen is a synthetic peptide directed towards the middle region of human ENOPH1
Sequence:	TDVTREASAA EEADVHVAVV VRPGNAGLTD DEKTYYSPLIT SFSELYLPSS
Predicted Reactivity:	Cow: 100%, Dog: 100%, Guinea Pig: 93%, Horse: 100%, Human: 100%, Mouse: 100%, Pig: 100%, Rabbit: 100%, Rat: 100%, Yeast: 92%
Characteristics:	This is a rabbit polyclonal antibody against ENOPH1. It was validated on Western Blot.
Purification:	Affinity Purified

Target Details

Target:	MASA (ENOPH1)
Alternative Name:	ENOPH1 (ENOPH1 Products)

Target Details

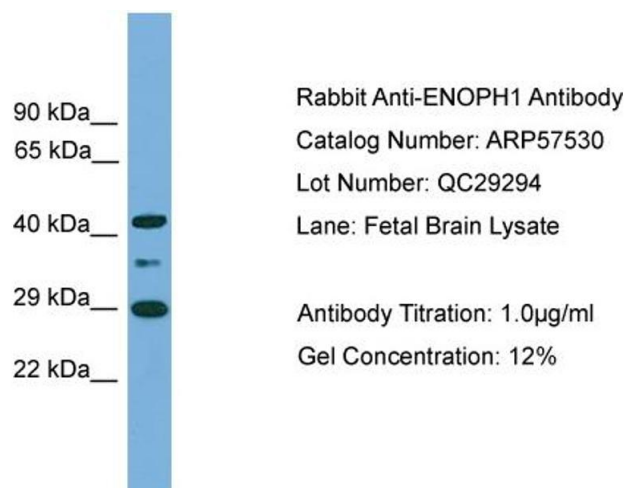
Background:	ENOPH1 is a bifunctional enzyme that catalyzes the enolization of 2,3-diketo-5-methylthiopentyl-1-phosphate (DK-MTP-1-P) into the intermediate 2-hydroxy-3-keto-5-methylthiopentenyl-1-phosphate (HK-MTPenyl-1-P), which is then dephosphorylated to form the acireductone 1,2-dihydroxy-3-keto-5-methylthiopentene (DHK-MTPene). Alias Symbols: DKFZp586M0524, E1, FLJ12594, MASA, MST145 Protein Interaction Partner: UBC, RAB10, RPS27, Protein Size: 261
Molecular Weight:	29 kDa
Gene ID:	58478
NCBI Accession:	NM_021204 , NP_067027
UniProt:	Q9UHY7
Pathways:	Methionine Biosynthetic Process

Application Details

Application Notes:	Optimal working dilutions should be determined experimentally by the investigator.
Comment:	Antigen size: 261 AA
Restrictions:	For Research Use only

Handling

Format:	Liquid
Concentration:	Lot specific
Buffer:	Liquid. Purified antibody supplied in 1x PBS buffer with 0.09 % (w/v) sodium azide and 2 % sucrose.
Preservative:	Sodium azide
Precaution of Use:	This product contains Sodium azide: a POISONOUS AND HAZARDOUS SUBSTANCE which should be handled by trained staff only.
Handling Advice:	Avoid repeated freeze-thaw cycles.
Storage:	-20 °C
Storage Comment:	For short term use, store at 2-8°C up to 1 week. For long term storage, store at -20°C in small aliquots to prevent freeze-thaw cycles.

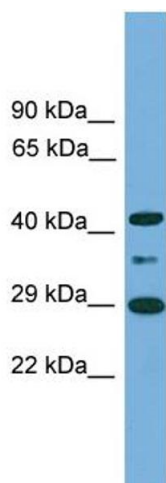


Western Blotting

Image 1. WB Suggested Anti-ENOPH1

Antibody Titration: 0.2-1 µg/mL ELISA Titer: 1:1562500

Positive Control: Human brain



Western Blotting

Image 2. WB Suggested Anti-ENOPH1 Antibody Titration:

0.2-1 ug/ml

ELISA Titer: 1:1562500

Positive Control: Human brain