



Datasheet for ABIN2787269
anti-RRAGD antibody (Middle Region)



[Go to Product page](#)

1 Image

Overview

Quantity:	100 µL
Target:	RRAGD
Binding Specificity:	Middle Region
Reactivity:	Human, Mouse, Rat, Cow, Dog, Horse, Pig, Guinea Pig, Rabbit, Sheep, Zebrafish (Danio rerio)
Host:	Rabbit
Clonality:	Polyclonal
Conjugate:	This RRAGD antibody is un-conjugated
Application:	Western Blotting (WB)

Product Details

Immunogen:	The immunogen is a synthetic peptide directed towards the middle region of human RRAGD
Sequence:	CDMIDVVIDI SCYGLKEDG AGTPYDKEST AIIKLNNTTV LYLKEVTKFL
Predicted Reactivity:	Cow: 100%, Dog: 100%, Guinea Pig: 77%, Horse: 100%, Human: 100%, Mouse: 86%, Pig: 100%, Rabbit: 93%, Rat: 100%, Sheep: 77%, Zebrafish: 77%
Characteristics:	This is a rabbit polyclonal antibody against RRAGD. It was validated on Western Blot using a cell lysate as a positive control.
Purification:	Affinity Purified

Target Details

Target:	RRAGD
---------	-------

Target Details

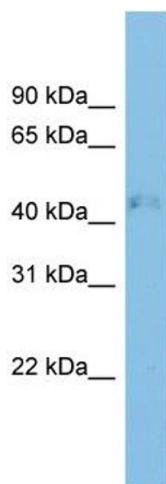
Alternative Name:	RRAGD (RRAGD Products)
Background:	<p>RRAGD is a monomeric guanine nucleotide-binding protein, or G protein. By binding GTP or GDP, small G proteins act as molecular switches in numerous cell processes and signaling pathways.</p> <p>Alias Symbols: DKFZP761H171, RAGD, bA11D8.2.1</p> <p>Protein Interaction Partner: RRAGC, RPTOR, RRAGB, LAMTOR1, LARS, UBC, MTOR, CHST15, NOL8, RRAGA,</p> <p>Protein Size: 400</p>
Molecular Weight:	45 kDa
Gene ID:	58528
NCBI Accession:	NM_021244 , NP_067067
UniProt:	Q9NQL2

Application Details

Application Notes:	Optimal working dilutions should be determined experimentally by the investigator.
Comment:	Antigen size: 400 AA
Restrictions:	For Research Use only

Handling

Format:	Liquid
Concentration:	Lot specific
Buffer:	Liquid. Purified antibody supplied in 1x PBS buffer with 0.09 % (w/v) sodium azide and 2 % sucrose.
Preservative:	Sodium azide
Precaution of Use:	This product contains Sodium azide: a POISONOUS AND HAZARDOUS SUBSTANCE which should be handled by trained staff only.
Handling Advice:	Avoid repeated freeze-thaw cycles.
Storage:	-20 °C
Storage Comment:	For short term use, store at 2-8°C up to 1 week. For long term storage, store at -20°C in small aliquots to prevent freeze-thaw cycles.



Western Blotting

Image 1. WB Suggested Anti-RRAGD Antibody Titration: 0.2-1 ug/ml ELISA Titer: 1:312500 Positive Control: A549 cell lysate