

Datasheet for ABIN2787272
anti-AFAP antibody (Middle Region)[Go to Product page](#)

2 Images

Overview

Quantity:	100 µL
Target:	AFAP (AFAP1)
Binding Specificity:	Middle Region
Reactivity:	Human, Mouse, Rat, Horse, Cow, Dog, Rabbit, Guinea Pig, Zebrafish (Danio rerio)
Host:	Rabbit
Clonality:	Polyclonal
Conjugate:	This AFAP antibody is un-conjugated
Application:	Western Blotting (WB)

Product Details

Immunogen:	The immunogen is a synthetic peptide directed towards the middle region of human AFAP1
Sequence:	QVKRKKSSKS EAKGTVSKVT GKKITKIISL GKPKPSTDEQ TSSAEEDVPT
Predicted Reactivity:	Cow: 100%, Dog: 100%, Guinea Pig: 100%, Horse: 100%, Human: 100%, Mouse: 100%, Rabbit: 100%, Rat: 100%, Zebrafish: 100%
Characteristics:	This is a rabbit polyclonal antibody against AFAP1. It was validated on Western Blot using a cell lysate as a positive control.
Purification:	Affinity Purified

Target Details

Target:	AFAP (AFAP1)
---------	--------------

Target Details

Alternative Name:	AFAP1 (AFAP1 Products)
Background:	<p>The protein encoded by this gene is a Src binding partner. It may represent a potential modulator of actin filament integrity in response to cellular signals, and may function as an adaptor protein by linking Src family members and/or other signaling proteins to actin filaments. Multiple transcript variants encoding different isoforms have been found for this gene.</p> <p>Alias Symbols: AFAP, AFAP-110, FLJ56849, AFAP1, AFAP110</p> <p>Protein Interaction Partner: MYC, AFAP1, SRC, PRKCZ, PRKCG, PRKCD, PRKCE, PRKCB, PRKCA, ACTA1, ACTC1,</p> <p>Protein Size: 730</p>
Molecular Weight:	810 kDa
Gene ID:	60312
NCBI Accession:	NM_198595 , NP_940997
UniProt:	Q8N556

Application Details

Application Notes:	Optimal working dilutions should be determined experimentally by the investigator.
Comment:	Antigen size: 730 AA
Restrictions:	For Research Use only

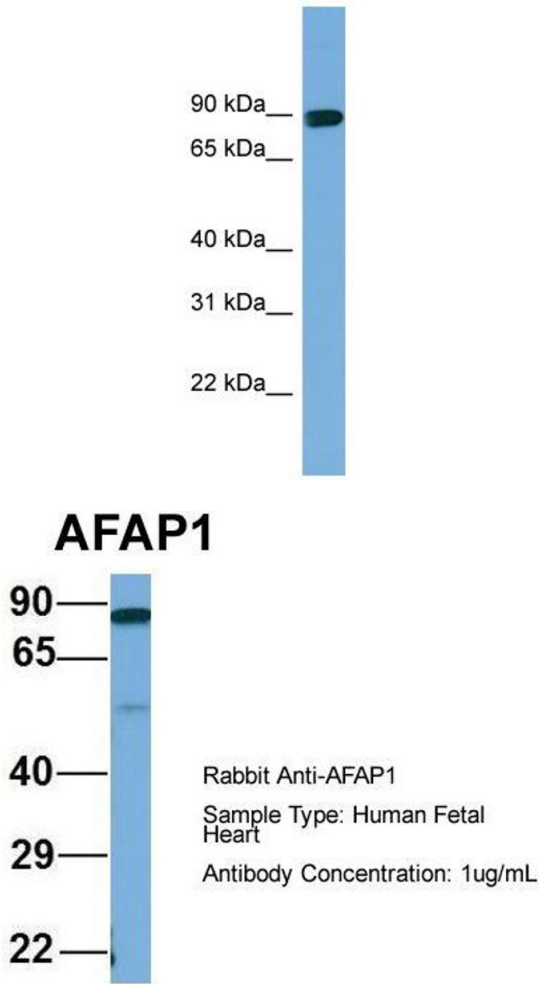
Handling

Format:	Liquid
Concentration:	Lot specific
Buffer:	Liquid. Purified antibody supplied in 1x PBS buffer with 0.09 % (w/v) sodium azide and 2 % sucrose.
Preservative:	Sodium azide
Precaution of Use:	This product contains Sodium azide: a POISONOUS AND HAZARDOUS SUBSTANCE which should be handled by trained staff only.
Handling Advice:	Avoid repeated freeze-thaw cycles.
Storage:	-20 °C

Handling

Storage Comment: For short term use, store at 2-8°C up to 1 week. For long term storage, store at -20°C in small aliquots to prevent freeze-thaw cycles.

Images



Western Blotting

Image 1. WB Suggested Anti-AFAP1 Antibody Titration:

0.2-1 ug/ml

Positive Control: Human Liver

Western Blotting

Image 2. Host: Rabbit

Target Name: AFAP1

Sample Tissue: Human Fetal Heart

Antibody Dilution: 1.0 µg/mL