

Datasheet for ABIN2787276
anti-HAPLN2 antibody (Middle Region)[Go to Product page](#)

2 Images

Overview

Quantity:	100 µL
Target:	HAPLN2
Binding Specificity:	Middle Region
Reactivity:	Human, Mouse, Rat, Cow, Dog, Guinea Pig, Horse, Zebrafish (Danio rerio)
Host:	Rabbit
Clonality:	Polyclonal
Conjugate:	This HAPLN2 antibody is un-conjugated
Application:	Western Blotting (WB)

Product Details

Immunogen:	The immunogen is a synthetic peptide directed towards the middle region of human HAPLN2
Sequence:	LDQCDGGWLA DGSVRFPIIT PRPRCGGLPD PGVRSFGFPR PQAAYGTYC
Predicted Reactivity:	Cow: 100%, Dog: 100%, Guinea Pig: 100%, Horse: 100%, Human: 100%, Mouse: 100%, Rat: 100%, Zebrafish: 77%
Characteristics:	This is a rabbit polyclonal antibody against HAPLN2. It was validated on Western Blot.
Purification:	Affinity Purified

Target Details

Target:	HAPLN2
Alternative Name:	HAPLN2 (HAPLN2 Products)

Target Details

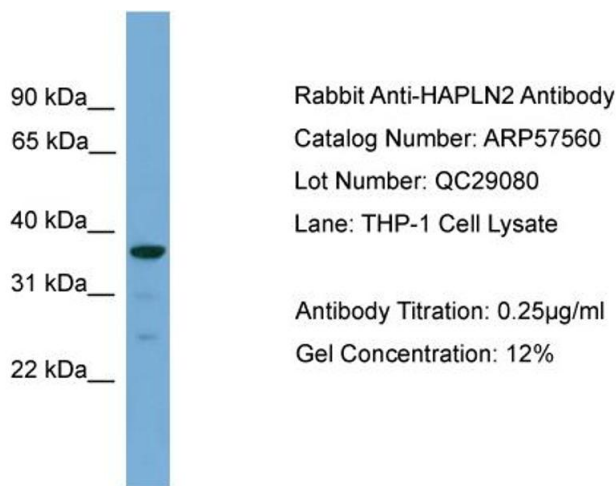
Background:	<p>HAPLN2 mediates a firm binding of versican V2 to hyaluronic acid. HAPLN2 may play a pivotal role in the formation of the hyaluronan-associated matrix in the central nervous system (CNS) which facilitates neuronal conduction and general structural stabilization. HAPLN2 binds to hyaluronic acid.</p> <p>Alias Symbols: BRAL1</p> <p>Protein Size: 340</p>
Molecular Weight:	38 kDa
Gene ID:	60484
NCBI Accession:	NM_021817 , NP_068589
UniProt:	Q9GZV7

Application Details

Application Notes:	Optimal working dilutions should be determined experimentally by the investigator.
Comment:	Antigen size: 340 AA
Restrictions:	For Research Use only

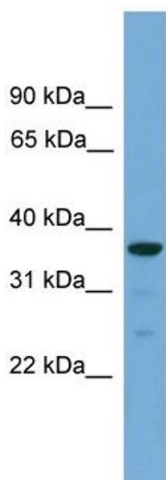
Handling

Format:	Liquid
Concentration:	Lot specific
Buffer:	Liquid. Purified antibody supplied in 1x PBS buffer with 0.09 % (w/v) sodium azide and 2 % sucrose.
Preservative:	Sodium azide
Precaution of Use:	This product contains Sodium azide: a POISONOUS AND HAZARDOUS SUBSTANCE which should be handled by trained staff only.
Handling Advice:	Avoid repeated freeze-thaw cycles.
Storage:	-20 °C
Storage Comment:	For short term use, store at 2-8°C up to 1 week. For long term storage, store at -20°C in small aliquots to prevent freeze-thaw cycles.



Western Blotting

Image 1. WB Suggested Anti-HAPLN2
Antibody Titration: 0.2-1 µg/mL ELISA Titer: 1:1562500
Positive Control: THP-1 cell lysate



Western Blotting

Image 2. WB Suggested Anti-HAPLN2 Antibody Titration:
0.2-1 ug/ml
ELISA Titer: 1:1562500
Positive Control: THP-1 cell lysate