

Datasheet for ABIN2787282
anti-NAP1L2 antibody (Middle Region)[Go to Product page](#)

2 Images

Overview

Quantity:	100 µL
Target:	NAP1L2
Binding Specificity:	Middle Region
Reactivity:	Human, Mouse, Rat, Rabbit, Horse, Pig, Dog, Cow, Guinea Pig, Zebrafish (Danio rerio)
Host:	Rabbit
Clonality:	Polyclonal
Conjugate:	This NAP1L2 antibody is un-conjugated
Application:	Western Blotting (WB)

Product Details

Immunogen:	The immunogen is a synthetic peptide directed towards the middle region of human NAP1L2
Sequence:	VDTLTPLIKK YDEPILKLLT DIKVKLSDPG EPLSFTLEFH FKPNEYFKNE
Predicted Reactivity:	Cow: 85%, Dog: 100%, Guinea Pig: 85%, Horse: 100%, Human: 100%, Mouse: 100%, Pig: 100%, Rabbit: 100%, Rat: 100%, Zebrafish: 86%
Characteristics:	This is a rabbit polyclonal antibody against NAP1L2. It was validated on Western Blot.
Purification:	Affinity Purified

Target Details

Target:	NAP1L2
Alternative Name:	NAP1L2 (NAP1L2 Products)

Target Details

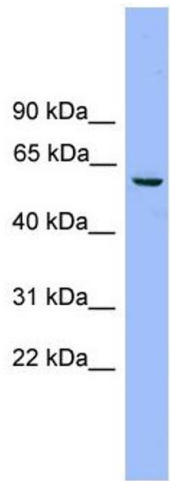
Background:	<p>This gene encodes a member of the nucleosome assembly protein (NAP) family. The function of this family member is unknown, however, mouse studies suggest that it represents a class of tissue-specific factors interacting with chromatin to regulate neuronal cell proliferation.</p> <p>Alias Symbols: BPX, MGC26243</p> <p>Protein Interaction Partner: PPP3R1, CUL1, UBC, SP110,</p> <p>Protein Size: 460</p>
Molecular Weight:	52 kDa
Gene ID:	4674
NCBI Accession:	NM_021963 , NP_068798
UniProt:	P51860

Application Details

Application Notes:	Optimal working dilutions should be determined experimentally by the investigator.
Comment:	Antigen size: 460 AA
Restrictions:	For Research Use only

Handling

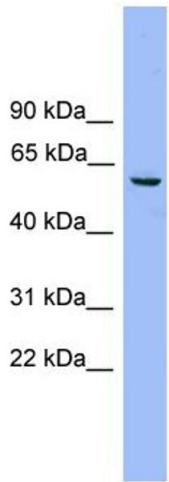
Format:	Liquid
Concentration:	Lot specific
Buffer:	Liquid. Purified antibody supplied in 1x PBS buffer with 0.09 % (w/v) sodium azide and 2 % sucrose.
Preservative:	Sodium azide
Precaution of Use:	This product contains Sodium azide: a POISONOUS AND HAZARDOUS SUBSTANCE which should be handled by trained staff only.
Handling Advice:	Avoid repeated freeze-thaw cycles.
Storage:	-20 °C
Storage Comment:	For short term use, store at 2-8°C up to 1 week. For long term storage, store at -20°C in small aliquots to prevent freeze-thaw cycles.



Western Blotting

Image 1. WB Suggested Anti-NAP1L2 Antibody Titration:
0.2-1 ug/ml

Positive Control: HepG2 cell lysate



Rabbit Anti-NAP1L2 Antibody
Catalog Number: ARP57574
Lot Number: QC28530
Lane: HepG2 Cell Lysate

Antibody Titration: 1.0µg/ml
Gel Concentration: 12%

Western Blotting

Image 2. WB Suggested Anti-NAP1L2
Antibody Titration: 0.2-1 µg/mL
Positive Control: HepG2 cell lysate