

Datasheet for ABIN2787289  
**anti-CTF18 antibody (Middle Region)**



[Go to Product page](#)

1 Image

## Overview

Quantity:	100 µL
Target:	CTF18 (CTTF18)
Binding Specificity:	Middle Region
Reactivity:	Human, Mouse, Rat, Dog, Cow, Guinea Pig, Zebrafish (Danio rerio), Horse, Pig
Host:	Rabbit
Clonality:	Polyclonal
Conjugate:	This CTF18 antibody is un-conjugated
Application:	Western Blotting (WB)

## Product Details

Immunogen:	The immunogen is a synthetic peptide directed towards the middle region of human CHTF18
Sequence:	QALLLDALCL LLDILAPKLR PVSTQLYSTR EKQQLASLVG TMLAYSLTYR
Predicted Reactivity:	Cow: 93%, Dog: 100%, Guinea Pig: 93%, Horse: 93%, Human: 100%, Mouse: 100%, Pig: 100%, Rat: 93%, Zebrafish: 83%
Characteristics:	This is a rabbit polyclonal antibody against CHTF18. It was validated on Western Blot using a cell lysate as a positive control.
Purification:	Affinity Purified

## Target Details

Target:	CTF18 (CTTF18)
---------	----------------

## Target Details

Alternative Name:	CHTF18 ( <a href="#">CHTF18 Products</a> )
Background:	<p>CHTF18, CHTF8 (MIM 613202), and DCC1 (DSCC1, MIM 613203) are components of an alternative replication factor C (RFC) (see MIM 600404) complex that loads PCNA (MIM 176740) onto DNA during S phase of the cell cycle (Merkle et al., 2003 [PubMed 12766176], Bermudez et al., 2003 [PubMed 12930902]).</p> <p>Alias Symbols: C16orf41, C321D2.2, C321D2.3, C321D2.4, CHL12, Ctf18, RUVBL</p> <p>Protein Interaction Partner: PCNA, RPA3, RPA2, RPA1, UBC, DSCC1, RFC2, SUMO2, MYC, DDX11, RFC4, RFC1, CHTF8, RFC3, SMC1A, RFC5, RAD21, HSP90AA1, HSPA4,</p> <p>Protein Size: 975</p>
Molecular Weight:	107 kDa
Gene ID:	63922
NCBI Accession:	<a href="#">NM_022092</a> , <a href="#">NP_071375</a>
UniProt:	<a href="#">Q8WVB6</a>

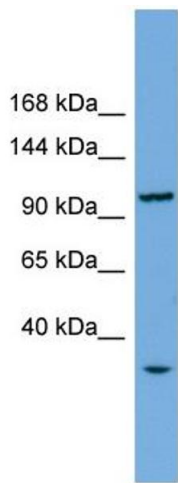
## Application Details

Application Notes:	Optimal working dilutions should be determined experimentally by the investigator.
Comment:	Antigen size: 975 AA
Restrictions:	For Research Use only

## Handling

Format:	Liquid
Concentration:	Lot specific
Buffer:	Liquid. Purified antibody supplied in 1x PBS buffer with 0.09 % (w/v) sodium azide and 2 % sucrose.
Preservative:	Sodium azide
Precaution of Use:	This product contains Sodium azide: a POISONOUS AND HAZARDOUS SUBSTANCE which should be handled by trained staff only.
Handling Advice:	Avoid repeated freeze-thaw cycles.
Storage:	-20 °C
Storage Comment:	For short term use, store at 2-8°C up to 1 week. For long term storage, store at -20°C in small

aliquots to prevent freeze-thaw cycles.



**Western Blotting**

**Image 1.** WB Suggested Anti-CHTF18 Antibody Titration: 0.2-1 ug/ml ELISA Titer: 1:1562500 Positive Control: Human Liver