

Datasheet for ABIN2787293
anti-XPNPEP3 antibody (N-Term)[Go to Product page](#)

3 Images

Overview

Quantity:	100 µL
Target:	XPNPEP3
Binding Specificity:	N-Term
Reactivity:	Human, Mouse, Rat, Dog, Horse, Rabbit, Cow, Zebrafish (Danio rerio), Guinea Pig
Host:	Rabbit
Clonality:	Polyclonal
Conjugate:	This XPNPEP3 antibody is un-conjugated
Application:	Western Blotting (WB)

Product Details

Immunogen:	The immunogen is a synthetic peptide directed towards the N terminal region of human XPNPEP3
Sequence:	PVPERRIPNR YLGQPSPFTH PHLLRPGEVT PGLSQVEYAL RRHKLMSLIQ
Predicted Reactivity:	Cow: 100%, Dog: 100%, Guinea Pig: 100%, Horse: 100%, Human: 100%, Mouse: 100%, Rabbit: 100%, Rat: 100%, Zebrafish: 79%
Characteristics:	This is a rabbit polyclonal antibody against XPNPEP3. It was validated on Western Blot.
Purification:	Affinity Purified

Target Details

Target:	XPNPEP3
---------	---------

Target Details

Alternative Name:	XPNPEP3 (XPNPEP3 Products)
Background:	The function of this protein remains unknown. Alias Symbols: APP3, NPHPL1 Protein Interaction Partner: UBC, BAG3, CFTR, CUL3, DYRK2, Protein Size: 507
Molecular Weight:	57 kDa
Gene ID:	63929
NCBI Accession:	NM_022098 , NP_071381
UniProt:	Q9NQH7

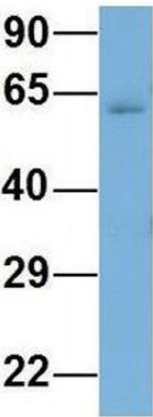
Application Details

Application Notes:	Optimal working dilutions should be determined experimentally by the investigator.
Comment:	Antigen size: 507 AA
Restrictions:	For Research Use only

Handling

Format:	Liquid
Concentration:	Lot specific
Buffer:	Liquid. Purified antibody supplied in 1x PBS buffer with 0.09 % (w/v) sodium azide and 2 % sucrose.
Preservative:	Sodium azide
Precaution of Use:	This product contains Sodium azide: a POISONOUS AND HAZARDOUS SUBSTANCE which should be handled by trained staff only.
Handling Advice:	Avoid repeated freeze-thaw cycles.
Storage:	-20 °C
Storage Comment:	For short term use, store at 2-8°C up to 1 week. For long term storage, store at -20°C in small aliquots to prevent freeze-thaw cycles.

XPNPEP3



Rabbit Anti-XPNPEP3
Sample Type: Human Adult Placenta
Antibody Concentration: 1ug/mL

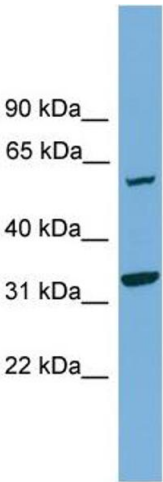
Western Blotting

Image 1. Host: Rabbit

Target Name: XPNPEP3

Sample Tissue: Human Adult Placenta

Antibody Dilution: 1.0 µg/mL

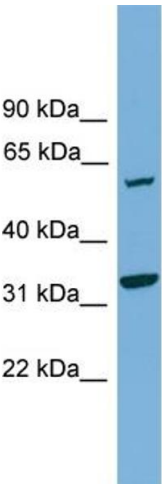


Western Blotting

Image 2. WB Suggested Anti-XPNPEP3 Antibody

Titration: 0.2-1 ug/ml

Positive Control: MCF7 cell lysate



Rabbit Anti-XPNPEP3 Antibody
Catalog Number: ARP57593
Lot Number: QC29298
Lane: MCF7 Cell Lysate

Antibody Titration: 1.0µg/ml
Gel Concentration: 12%

Western Blotting

Image 3. WB Suggested Anti-XPNPEP3

Antibody Titration: 0.2-1 µg/mL

Positive Control: MCF7 cell lysate