

Datasheet for ABIN2787299  
**anti-PARVG antibody (N-Term)**[Go to Product page](#)

## 1 Image

## Overview

Quantity:	100 µL
Target:	PARVG
Binding Specificity:	N-Term
Reactivity:	Human, Mouse, Rat, Cow, Dog, Guinea Pig, Horse, Rabbit, Zebrafish (Danio rerio)
Host:	Rabbit
Clonality:	Polyclonal
Conjugate:	This PARVG antibody is un-conjugated
Application:	Western Blotting (WB)

## Product Details

Immunogen:	The immunogen is a synthetic peptide directed towards the N-terminal region of Human PARVG
Sequence:	RKDPKFEELQ KVLMEWINAT LLPEHIVVRS LEEDMFDGLI LHHLFQRLAA
Predicted Reactivity:	Cow: 100%, Dog: 100%, Guinea Pig: 100%, Horse: 100%, Human: 100%, Mouse: 100%, Rabbit: 93%, Rat: 100%, Zebrafish: 100%
Characteristics:	This is a rabbit polyclonal antibody against PARVG. It was validated on Western Blot.
Purification:	Affinity Purified

## Target Details

Target:	PARVG
---------	-------

## Target Details

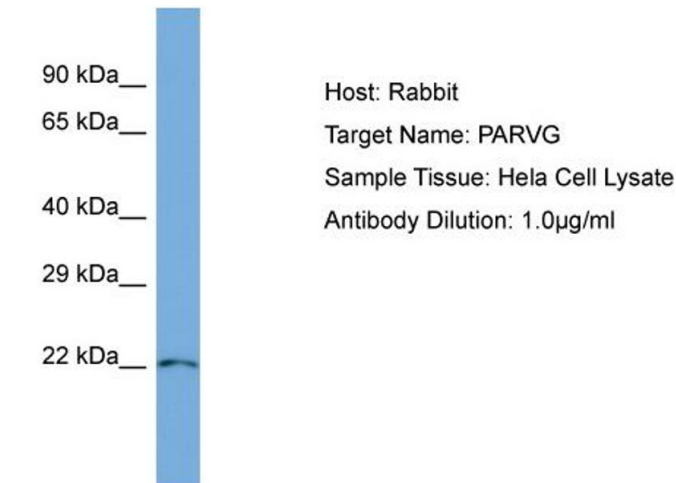
Alternative Name:	PARVG ( <a href="#">PARVG Products</a> )
Background:	<p>Members of the parvin family, including PARVG, are actin-binding proteins associated with focal contacts.</p> <p>Protein Interaction Partner: KLHL32, USHBP1, REL, MEOX2, ILK, AES, STRN3, ZNF677, FOSL1, APP, UBC,</p> <p>Protein Size: 187</p>
Molecular Weight:	20 kDa
Gene ID:	64098

## Application Details

Application Notes:	Optimal working dilution should be determined by the investigator.
Restrictions:	For Research Use only

## Handling

Format:	Liquid
Concentration:	1 mg/mL
Buffer:	Liquid. Purified antibody supplied in 1x PBS buffer with 0.09 % (w/v) sodium azide and 2 % sucrose.
Preservative:	Sodium azide
Precaution of Use:	This product contains Sodium azide: a POISONOUS AND HAZARDOUS SUBSTANCE which should be handled by trained staff only.
Handling Advice:	Avoid repeat freeze-thaw cycles.
Storage:	-20 °C
Storage Comment:	For short term use, store at 2-8°C up to 1 week. For long term storage, store at -20°C in small aliquots to prevent freeze-thaw cycles.



Host: Rabbit  
Target Name: PARVG  
Sample Tissue: Hela Cell Lysate  
Antibody Dilution: 1.0µg/ml

Western Blotting

**Image 1.** Host: Rabbit Target Name: PARVG Sample Type: Hela Whole Cell lysates Antibody Dilution: 1.0ug/ml