

Datasheet for ABIN2787305
anti-TINAGL1 antibody (Middle Region)[Go to Product page](#)

5 Images

Overview

Quantity:	100 µL
Target:	TINAGL1
Binding Specificity:	Middle Region
Reactivity:	Human, Mouse, Rat, Cow, Guinea Pig, Horse, Dog, Rabbit, Zebrafish (Danio rerio)
Host:	Rabbit
Clonality:	Polyclonal
Conjugate:	This TINAGL1 antibody is un-conjugated
Application:	Western Blotting (WB)

Product Details

Immunogen:	The immunogen is a synthetic peptide directed towards the middle region of human TINAGL1
Sequence:	NLIHEPLDQG NCAGSWAFST AAVASDRVSI HSLGHMTPVL SPQNLLSCDT
Predicted Reactivity:	Cow: 100%, Dog: 100%, Guinea Pig: 100%, Horse: 100%, Human: 100%, Mouse: 100%, Rabbit: 100%, Rat: 100%, Zebrafish: 86%
Characteristics:	This is a rabbit polyclonal antibody against TINAGL1. It was validated on Western Blot using a cell lysate as a positive control.
Purification:	Affinity Purified

Target Details

Target:	TINAGL1
---------	---------

Target Details

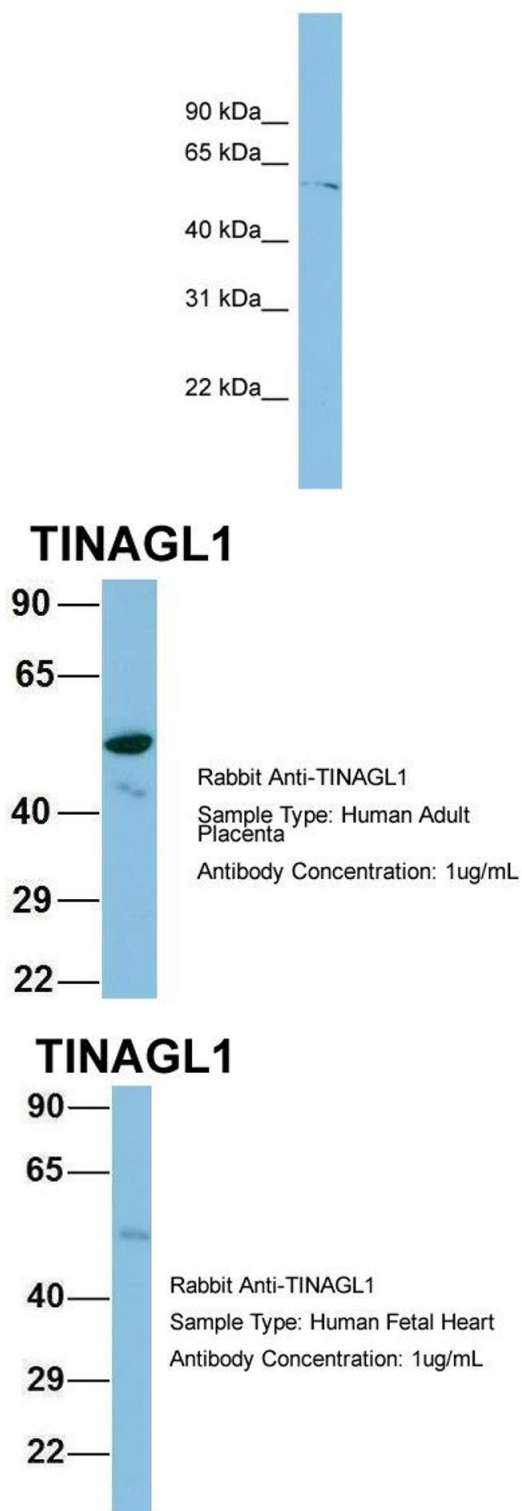
Alternative Name:	TINAGL1 (TINAGL1 Products)
Background:	<p>TINAGL1 may be implicated in the adrenocortical zonation and in mechanisms for repressing the CYP11B1 gene expression in adrenocortical cells. This is a non catalytic peptidase C1 family protein.</p> <p>Alias Symbols: ARG1, LCN7, LIECG3, TINAGRP</p> <p>Protein Interaction Partner: NOTCH2NL, KRTAP10-3, KRTAP12-2, KRTAP4-2, RBPMS, TRIP13, CAPN1, LMO4, SMAD9, EP300, COPS5, SHBG, MED31, MDFI, UTP14A,</p> <p>Protein Size: 467</p>
Molecular Weight:	52 kDa
Gene ID:	64129
NCBI Accession:	NM_022164 , NP_071447
UniProt:	Q9GZM7

Application Details

Application Notes:	Optimal working dilutions should be determined experimentally by the investigator.
Comment:	Antigen size: 467 AA
Restrictions:	For Research Use only

Handling

Format:	Liquid
Concentration:	Lot specific
Buffer:	Liquid. Purified antibody supplied in 1x PBS buffer with 0.09 % (w/v) sodium azide and 2 % sucrose.
Preservative:	Sodium azide
Precaution of Use:	This product contains Sodium azide: a POISONOUS AND HAZARDOUS SUBSTANCE which should be handled by trained staff only.
Handling Advice:	Avoid repeated freeze-thaw cycles.
Storage:	-20 °C
Storage Comment:	For short term use, store at 2-8°C up to 1 week. For long term storage, store at -20°C in small aliquots to prevent freeze-thaw cycles.



Western Blotting

Image 1. WB Suggested Anti-TINAGL1 Antibody Titration: 0.2-1 ug/ml ELISA Titer: 1:312500 Positive Control: ACHN cell lysate TINAGL1 is supported by BioGPS gene expression data to be expressed in ACHN

Western Blotting

Image 2. Host: Rabbit Target Name: CHAD Sample Type: Human Adult Placenta Antibody Dilution: 1.0ug/ml

Western Blotting

Image 3. Host: Rabbit Target Name: TINAGL1 Sample Type: Human Fetal Heart Antibody Dilution: 1.0ug/ml

Please check the [product details page](#) for more images. Overall 5 images are available for ABIN2787305.