

Datasheet for ABIN2787316  
**anti-POLR1E antibody (N-Term)**[Go to Product page](#)

## 2 Images

## Overview

Quantity:	100 µL
Target:	POLR1E
Binding Specificity:	N-Term
Reactivity:	Human, Mouse, Rat, Horse, Cow, Dog, Guinea Pig, Rabbit
Host:	Rabbit
Clonality:	Polyclonal
Conjugate:	This POLR1E antibody is un-conjugated
Application:	Western Blotting (WB)

## Product Details

Immunogen:	The immunogen is a synthetic peptide directed towards the N terminal region of human POLR1E
Sequence:	SPGNMRFTLY ENKDSTNPRK RNQRILAAET DRLSYVGNNF GTGALKCNTL
Predicted Reactivity:	Cow: 100%, Dog: 100%, Guinea Pig: 100%, Horse: 100%, Human: 100%, Mouse: 100%, Rabbit: 93%, Rat: 100%
Characteristics:	This is a rabbit polyclonal antibody against POLR1E. It was validated on Western Blot using a cell lysate as a positive control.
Purification:	Affinity Purified

## Target Details

Target:	POLR1E
---------	--------

## Target Details

Alternative Name:	POLR1E ( <a href="#">POLR1E Products</a> )
Background:	<p>POLR1E is a DNA-dependent RNA polymerase catalyzes the transcription of DNA into RNA using the four ribonucleoside triphosphates as substrates. POLR1E is the component of RNA polymerase I which synthesizes ribosomal RNA precursors. POLR1E appears to be involved in the formation of the initiation complex at the promoter by mediating the interaction between Pol I and UBTF/UBF.</p> <p>Alias Symbols: FLJ13390, FLJ13970, PAF53, PRAF1, RP11-405L18.3</p> <p>Protein Interaction Partner: UBC, RNF2, PAXIP1, CPSF3, ARRB1, CEBPA, SMARCAD1, RPA49, RRN3, POLR1A, SUPT16H, TAF1D, POLR1C, NFKBIB, POLR1B, TAF1C, UBTF, CD3EAP, QPCTL, DDX20, HNRNPUL1, DDX6,</p> <p>Protein Size: 419</p>
Molecular Weight:	47 kDa
Gene ID:	64425
NCBI Accession:	<a href="#">NM_022490</a> , <a href="#">NP_071935</a>

## Application Details

Application Notes:	Optimal working dilutions should be determined experimentally by the investigator.
Comment:	Antigen size: 419 AA
Restrictions:	For Research Use only

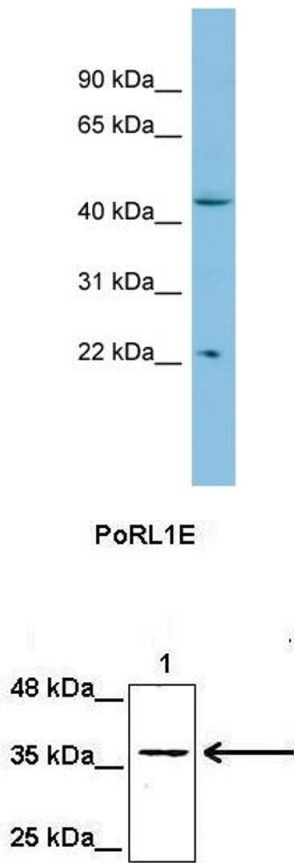
## Handling

Format:	Liquid
Concentration:	Lot specific
Buffer:	Liquid. Purified antibody supplied in 1x PBS buffer with 0.09 % (w/v) sodium azide and 2 % sucrose.
Preservative:	Sodium azide
Precaution of Use:	This product contains Sodium azide: a POISONOUS AND HAZARDOUS SUBSTANCE which should be handled by trained staff only.
Handling Advice:	Avoid repeated freeze-thaw cycles.
Storage:	-20 °C

Handling

Storage Comment: For short term use, store at 2-8°C up to 1 week. For long term storage, store at -20°C in small aliquots to prevent freeze-thaw cycles.

Images



Western Blotting

**Image 1.** WB Suggested Anti-POLR1E Antibody Titration: 0.2-1 ug/ml ELISA Titer: 1:312500 Positive Control: Hela cell lysate

Western Blotting

**Image 2.** Lanes: Lane1: 50 ug mouse heptoma cell lysate Primary Antibody Dilution: 1:1000 Secondary Antibody: Anti-rabbit HRP Secondary Antibody Dilution: 1:5000 Gene Name: PORL1E Submitted by: Eekjoong Park, UCSD

See Immunoblot 2 Data and Customer Feedback for more information