



[Go to Product page](#)

Datasheet for ABIN2787320
anti-ATPAF1 antibody (N-Term)

2 Images

Overview

Quantity:	100 µL
Target:	ATPAF1
Binding Specificity:	N-Term
Reactivity:	Human, Rat, Mouse, Dog, Rabbit, Guinea Pig, Cow
Host:	Rabbit
Clonality:	Polyclonal
Conjugate:	This ATPAF1 antibody is un-conjugated
Application:	Western Blotting (WB)

Product Details

Immunogen:	The immunogen is a synthetic peptide directed towards the N terminal region of human ATPAF1
Sequence:	GLGLVSPAQL RVFPVRPGSG RPEGGADSSG VGAEAEQLQAN PFYDRYRDKI
Predicted Reactivity:	Cow: 93%, Dog: 93%, Guinea Pig: 86%, Human: 100%, Mouse: 93%, Rabbit: 79%, Rat: 86%
Characteristics:	This is a rabbit polyclonal antibody against ATPAF1. It was validated on Western Blot.
Purification:	Affinity Purified

Target Details

Target:	ATPAF1
Alternative Name:	ATPAF1 (ATPAF1 Products)

Target Details

Background: This gene encodes an assembly factor for the F(1) component of the mitochondrial ATP synthase. This protein binds specifically to the F1 beta subunit and is thought to prevent this subunit from forming nonproductive homooligomers during enzyme assembly. Alternatively spliced transcript variants have been identified, but the biological validity of some of these variants has not been determined.

Alias Symbols: ATP11, ATP11p, FLJ22351, MGC88060

Protein Interaction Partner: UBC, ATP5B, ATP5A1,

Protein Size: 260

Molecular Weight: 29 kDa

Gene ID: 64756

NCBI Accession: [NM_001042546](#), [NP_001036011](#)

UniProt: [A8MRA7](#)

Application Details

Application Notes: Optimal working dilutions should be determined experimentally by the investigator.

Comment: Antigen size: 260 AA

Restrictions: For Research Use only

Handling

Format: Liquid

Concentration: Lot specific

Buffer: Liquid. Purified antibody supplied in 1x PBS buffer with 0.09 % (w/v) sodium azide and 2 % sucrose.

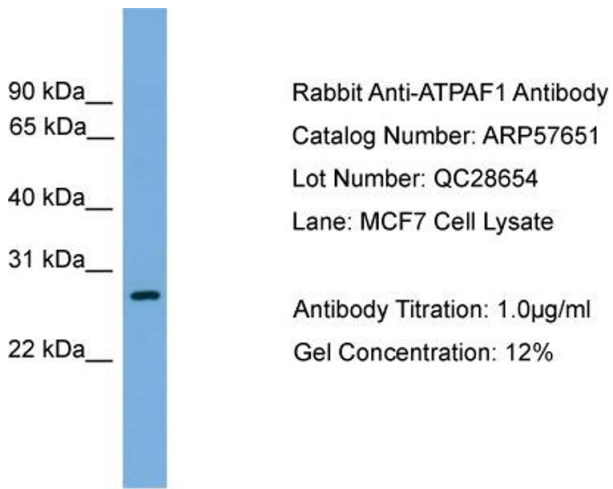
Preservative: Sodium azide

Precaution of Use: This product contains Sodium azide: a POISONOUS AND HAZARDOUS SUBSTANCE which should be handled by trained staff only.

Handling Advice: Avoid repeated freeze-thaw cycles.

Storage: -20 °C

Storage Comment: For short term use, store at 2-8°C up to 1 week. For long term storage, store at -20°C in small aliquots to prevent freeze-thaw cycles.

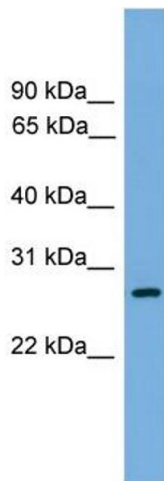


Western Blotting

Image 1. WB Suggested Anti-ATPAF1

Antibody Titration: 0.2-1 µg/mL

Positive Control: MCF7 cell lysate



Western Blotting

Image 2. WB Suggested Anti-ATPAF1 Antibody Titration:

0.2-1 ug/ml

Positive Control: MCF7 cell lysate