



[Go to Product page](#)

Datasheet for ABIN2787322
anti-IPPK antibody (Middle Region)

1 Image

Overview

Quantity:	100 µL
Target:	IPPK
Binding Specificity:	Middle Region
Reactivity:	Human, Mouse, Rat, Dog, Horse, Cow, Rabbit, Guinea Pig, Zebrafish (Danio rerio)
Host:	Rabbit
Clonality:	Polyclonal
Conjugate:	This IPPK antibody is un-conjugated
Application:	Western Blotting (WB)

Product Details

Immunogen:	The immunogen is a synthetic peptide directed towards the middle region of human IPPK
Sequence:	KTLQVQMLDL LDIEGLYPLY NRVERYLEEF PEERKTLQID GPYDEAFYQK
Predicted Reactivity:	Cow: 100%, Dog: 79%, Guinea Pig: 93%, Horse: 100%, Human: 100%, Mouse: 100%, Rabbit: 100%, Rat: 100%, Zebrafish: 85%
Characteristics:	This is a rabbit polyclonal antibody against IPPK. It was validated on Western Blot using a cell lysate as a positive control.
Purification:	Affinity Purified

Target Details

Target:	IPPK
---------	------

Target Details

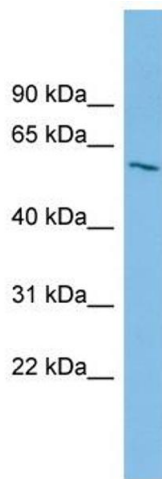
Alternative Name:	IPPK (IPPK Products)
Background:	<p>IPPK phosphorylates Ins(1,3,4,5,6)P5 at position 2 to form Ins(1,2,3,4,5,6)P6 (InsP6 or phytate). InsP6 is involved in many processes such as mRNA export, non-homologous end-joining, endocytosis, ion channel regulation. It also protects cells from TNF-alpha-induced apoptosis.</p> <p>Alias Symbols: C9orf12, FLJ13163, INSP5K2, KIAA0699, bA476B13.1, IP5K, IPK1</p> <p>Protein Interaction Partner: CDK12, UBC,</p> <p>Protein Size: 491</p>
Molecular Weight:	56 kDa
Gene ID:	64768
NCBI Accession:	NM_022755 , NP_073592
UniProt:	Q9H8X2

Application Details

Application Notes:	Optimal working dilutions should be determined experimentally by the investigator.
Comment:	Antigen size: 491 AA
Restrictions:	For Research Use only

Handling

Format:	Liquid
Concentration:	Lot specific
Buffer:	Liquid. Purified antibody supplied in 1x PBS buffer with 0.09 % (w/v) sodium azide and 2 % sucrose.
Preservative:	Sodium azide
Precaution of Use:	This product contains Sodium azide: a POISONOUS AND HAZARDOUS SUBSTANCE which should be handled by trained staff only.
Handling Advice:	Avoid repeated freeze-thaw cycles.
Storage:	-20 °C
Storage Comment:	For short term use, store at 2-8°C up to 1 week. For long term storage, store at -20°C in small aliquots to prevent freeze-thaw cycles.



Western Blotting

Image 1. WB Suggested Anti-IPPK Antibody Titration: 0.2-1 ug/ml ELISA Titer: 1:312500 Positive Control: HepG2 cell lysate