

Datasheet for ABIN2787341  
**anti-POLR2C antibody (C-Term)**[Go to Product page](#)

## 1 Image

## Overview

Quantity:	100 µL
Target:	POLR2C
Binding Specificity:	C-Term
Reactivity:	Human, Mouse, Rat, Cow, Dog, Guinea Pig, Horse, Rabbit
Host:	Rabbit
Clonality:	Polyclonal
Conjugate:	This POLR2C antibody is un-conjugated
Application:	Western Blotting (WB)

## Product Details

Immunogen:	The immunogen is a synthetic peptide directed towards the C-terminal region of mouse POLR2C
Sequence:	YDPDNALRHT VYPKPEEWPK SEYSELDEDE SQAPYDPNGK PERLGDLGPR
Predicted Reactivity:	Cow: 100%, Dog: 100%, Guinea Pig: 100%, Horse: 100%, Human: 100%, Mouse: 100%, Rabbit: 100%, Rat: 100%
Characteristics:	This is a rabbit polyclonal antibody against Polr2c. It was validated on Western Blot.
Purification:	Affinity Purified

## Target Details

Target:	POLR2C
---------	--------

## Target Details

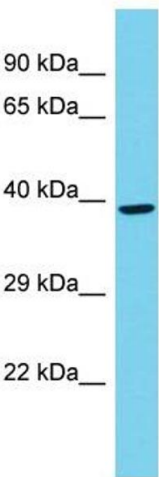
Alternative Name:	Polr2c ( <a href="#">POLR2C Products</a> )
Background:	<p>This gene encodes the third largest subunit of RNA polymerase II, the polymerase responsible for synthesizing messenger RNA in eukaryotes. The product of this gene contains a cysteine rich region and exists as a heterodimer with another polymerase subunit, POLR2J. These two subunits form a core subassembly unit of the polymerase. A pseudogene has been identified on chromosome 21.</p> <p>Alias Symbols: RPB3, RPB31, hRPB33, hsRPB3</p> <p>Protein Size: 332</p>
Molecular Weight:	36 kDa
Gene ID:	5432
NCBI Accession:	<a href="#">NM_032940</a> , <a href="#">NP_116558</a>
UniProt:	<a href="#">P19387</a>
Pathways:	<a href="#">Regulatory RNA Pathways</a>

## Application Details

Application Notes:	Optimal working dilution should be determined by the investigator.
Restrictions:	For Research Use only

## Handling

Format:	Liquid
Concentration:	1 mg/mL
Buffer:	Liquid. Purified antibody supplied in 1x PBS buffer with 0.09 % (w/v) sodium azide and 2 % sucrose.
Preservative:	Sodium azide
Precaution of Use:	This product contains Sodium azide: a POISONOUS AND HAZARDOUS SUBSTANCE which should be handled by trained staff only.
Handling Advice:	Avoid repeat freeze-thaw cycles.
Storage:	-20 °C
Storage Comment:	For short term use, store at 2-8°C up to 1 week. For long term storage, store at -20°C in small aliquots to prevent freeze-thaw cycles.



**Western Blotting**

**Image 1.**