

Datasheet for ABIN2787344
anti-BBS4 antibody (N-Term)

3 Images

[Go to Product page](#)

Overview

Quantity:	100 µL
Target:	BBS4
Binding Specificity:	N-Term
Reactivity:	Human, Mouse, Rat, Dog, Pig, Horse, Cow, Rabbit, Zebrafish (Danio rerio), Guinea Pig
Host:	Rabbit
Clonality:	Polyclonal
Conjugate:	This BBS4 antibody is un-conjugated
Application:	Western Blotting (WB)

Product Details

Immunogen:	The immunogen is a synthetic peptide directed towards the N terminal region of human BBS4
Sequence:	YVQALIFRLE GNIQESLELF QTCVLSPQS ADNLKQVARS LFLLGKHKAA
Predicted Reactivity:	Cow: 93%, Dog: 100%, Guinea Pig: 93%, Horse: 100%, Human: 100%, Mouse: 100%, Pig: 100%, Rabbit: 93%, Rat: 100%, Zebrafish: 93%
Characteristics:	This is a rabbit polyclonal antibody against BBS4. It was validated on Western Blot.
Purification:	Affinity Purified

Target Details

Target:	BBS4
Alternative Name:	BBS4 (BBS4 Products)

Target Details

Background:	<p>This gene is a member of the Bardet-Biedl syndrome (BBS) gene family. Bardet-Biedl syndrome is an autosomal recessive disorder characterized by severe pigmentary retinopathy, obesity, polydactyly, renal malformation and mental retardation. The proteins encoded by BBS gene family members are structurally diverse. The similar phenotypes exhibited by mutations in BBS gene family members are likely due to the protein's shared roles in cilia formation and function. Many BBS proteins localize to the basal bodies, ciliary axonemes, and pericentriolar regions of cells. BBS proteins may also be involved in intracellular trafficking via microtubule-related transport. The protein encoded by this gene has sequence similarity to O-linked N-acetylglucosamine (O-GlcNAc) transferases in plants and archaebacteria and in human forms a multi-protein "BBSome" complex with six other BBS proteins. Alternative splice variants have been described but their predicted protein products have not been experimentally verified.</p> <p>Alias Symbols: -</p> <p>Protein Interaction Partner: MYOG, HSCB, FHOD1, EXOC7, EIF3A, PCM1, PAX2, KRT18, EPAS1, EEF1A1, DCTN1, CALCA, BHMT, ALDOB, ACTB, CUL3, UBC,</p> <p>Protein Size: 519</p>
-------------	---

Molecular Weight:	58 kDa
-------------------	--------

Gene ID:	585
----------	-----

NCBI Accession:	NM_033028 , NP_149017
-----------------	---

UniProt:	Q96RK4
----------	------------------------

Pathways:	Hedgehog Signaling , Tube Formation , Maintenance of Protein Location
-----------	---

Application Details

Application Notes:	Optimal working dilutions should be determined experimentally by the investigator.
--------------------	--

Comment:	Antigen size: 519 AA
----------	----------------------

Restrictions:	For Research Use only
---------------	-----------------------

Handling

Format:	Liquid
---------	--------

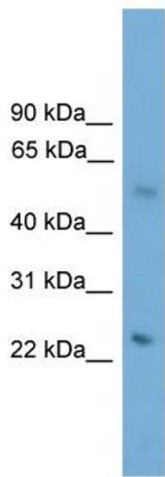
Concentration:	Lot specific
----------------	--------------

Buffer:	Liquid. Purified antibody supplied in 1x PBS buffer with 0.09 % (w/v) sodium azide and 2 % sucrose.
---------	---

Handling

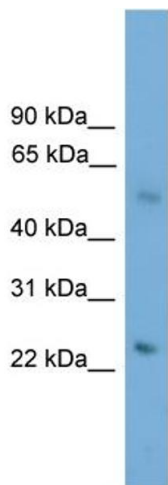
Preservative:	Sodium azide
Precaution of Use:	This product contains Sodium azide: a POISONOUS AND HAZARDOUS SUBSTANCE which should be handled by trained staff only.
Handling Advice:	Avoid repeated freeze-thaw cycles.
Storage:	-20 °C
Storage Comment:	For short term use, store at 2-8°C up to 1 week. For long term storage, store at -20°C in small aliquots to prevent freeze-thaw cycles.

Images



Western Blotting

Image 1. WB Suggested Anti-BBS4 Antibody Titration: 0.2-1 ug/ml
ELISA Titer: 1:312500
Positive Control: HepG2 cell lysate

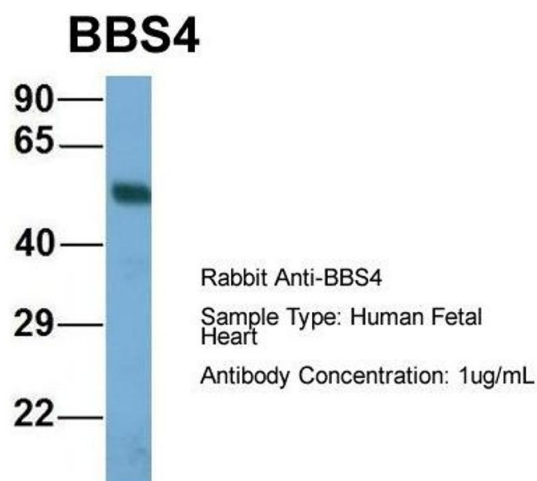


Rabbit Anti-BBS4 Antibody
Catalog Number: ARP57695
Lot Number: QC28986
Lane: HepG2 Cell Lysate

Antibody Titration: 1.0µg/ml
Gel Concentration: 12%

Western Blotting

Image 2. WB Suggested Anti-BBS4
Antibody Titration: 0.2-1 µg/mL **ELISA Titer:** 1:12500
Positive Control: HepG2 cell lysate



Western Blotting

Image 3. Host: Rabbit
Target Name: BBS4
Sample Tissue: Human Fetal Heart
Antibody Dilution: 1.0 µg/mL