

Datasheet for ABIN2787350  
**anti-PPP4R4 antibody (C-Term)**



[Go to Product page](#)

1 Image

## Overview

Quantity:	100 µL
Target:	PPP4R4
Binding Specificity:	C-Term
Reactivity:	Mouse, Human, Cow, Dog, Guinea Pig, Horse, Rabbit, Rat
Host:	Rabbit
Clonality:	Polyclonal
Conjugate:	This PPP4R4 antibody is un-conjugated
Application:	Western Blotting (WB)

## Product Details

Sequence:	VKKTVLELDR MEMSMDMFQK KNYEKDLLDQ EKEREELLFL EMEQLEKEKH
Predicted Reactivity:	Cow: 100%, Dog: 100%, Guinea Pig: 100%, Horse: 100%, Human: 100%, Mouse: 100%, Rabbit: 100%, Rat: 100%
Characteristics:	This is a rabbit polyclonal antibody against Ppp4r4. It was validated on Western Blot.
Purification:	Affinity Purified

## Target Details

Target:	PPP4R4
Alternative Name:	Ppp4r4 ( <a href="#">PPP4R4 Products</a> )
Background:	Ppp4r4 is a putative regulatory subunit of serine/threonine-protein phosphatase 4.

## Target Details

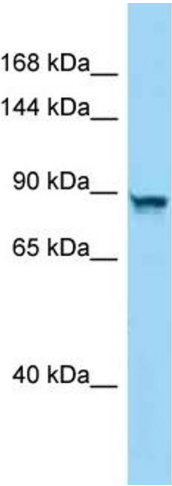
	Alias Symbols: 8430415E04Rik, mKIAA1622
	Protein Size: 875
Molecular Weight:	96 kDa
Gene ID:	74521
NCBI Accession:	<a href="#">NM_028980</a> , <a href="#">NP_083256</a>
UniProt:	<a href="#">Q8C0Y0</a>

## Application Details

Application Notes:	Optimal working dilutions should be determined experimentally by the investigator.
Comment:	Antigen size: 875 AA
Restrictions:	For Research Use only

## Handling

Format:	Liquid
Concentration:	Lot specific
Buffer:	Liquid. Purified antibody supplied in 1x PBS buffer with 0.09 % (w/v) sodium azide and 2 % sucrose.
Preservative:	Sodium azide
Precaution of Use:	This product contains Sodium azide: a POISONOUS AND HAZARDOUS SUBSTANCE which should be handled by trained staff only.
Handling Advice:	Avoid repeated freeze-thaw cycles.
Storage:	-20 °C
Storage Comment:	For short term use, store at 2-8°C up to 1 week. For long term storage, store at -20°C in small aliquots to prevent freeze-thaw cycles.



Rabbit Anti-Ppp4r4 Antibody  
Catalog Number: ARP57709  
Lot Number: QC29310  
Lane: Mouse Liver Lysate  
  
Antibody Titration: 1.0µg/ml  
Gel Concentration: 6-18%

Western Blotting

Image 1.