

Datasheet for ABIN2787354  
**anti-VPS16 antibody (Middle Region)**[Go to Product page](#)

## 2 Images

## Overview

Quantity:	100 µL
Target:	VPS16
Binding Specificity:	Middle Region
Reactivity:	Human, Mouse, Rat, Cow, Horse, Rabbit, Guinea Pig, Dog
Host:	Rabbit
Clonality:	Polyclonal
Conjugate:	This VPS16 antibody is un-conjugated
Application:	Western Blotting (WB)

## Product Details

Immunogen:	The immunogen is a synthetic peptide directed towards the middle region of human VPS16
Sequence:	VGDVAQAADV AIEHRNEAEL SLVLSHCTGA TDGATADKIQ RARAQAQKK
Predicted Reactivity:	Cow: 100%, Dog: 100%, Guinea Pig: 100%, Horse: 100%, Human: 100%, Mouse: 100%, Rabbit: 100%, Rat: 100%
Characteristics:	This is a rabbit polyclonal antibody against VPS16. It was validated on Western Blot.
Purification:	Affinity Purified

## Target Details

Target:	VPS16
Alternative Name:	VPS16 ( <a href="#">VPS16 Products</a> )

## Target Details

Background:	<p>Vesicle mediated protein sorting plays an important role in segregation of intracellular molecules into distinct organelles. Genetic studies in yeast have identified more than 40 vacuolar protein sorting (VPS) genes involved in vesicle transport to vacuoles. This gene encodes the human homolog of yeast class C Vps16 protein. The mammalian class C Vps proteins are predominantly associated with late endosomes/lysosomes, and like their yeast counterparts, may mediate vesicle trafficking steps in the endosome/lysosome pathway. Two transcript variants encoding different isoforms have been found for this gene.</p> <p>Alias Symbols: hVPS16</p> <p>Protein Interaction Partner: UBC, MON1B, VPS33A, VPS18, TSR1, VPS41, WAPAL, TNPO1, HOOK3, AKTIP, HOOK1, HOOK2, UVRAG, Plk2, VPS16, VPS11, STX7,</p> <p>Protein Size: 695</p>
-------------	---

Molecular Weight:	76 kDa
-------------------	--------

Gene ID:	64601
----------	-------

NCBI Accession:	<a href="#">NM_080413</a> , <a href="#">NP_536338</a>
-----------------	---

UniProt:	<a href="#">Q9H269</a>
----------	------------------------

## Application Details

Application Notes:	Optimal working dilutions should be determined experimentally by the investigator.
--------------------	--

Comment:	Antigen size: 695 AA
----------	----------------------

Restrictions:	For Research Use only
---------------	-----------------------

## Handling

Format:	Liquid
---------	--------

Concentration:	Lot specific
----------------	--------------

Buffer:	Liquid. Purified antibody supplied in 1x PBS buffer with 0.09 % (w/v) sodium azide and 2 % sucrose.
---------	---

Preservative:	Sodium azide
---------------	--------------

Precaution of Use:	This product contains Sodium azide: a POISONOUS AND HAZARDOUS SUBSTANCE which should be handled by trained staff only.
--------------------	--

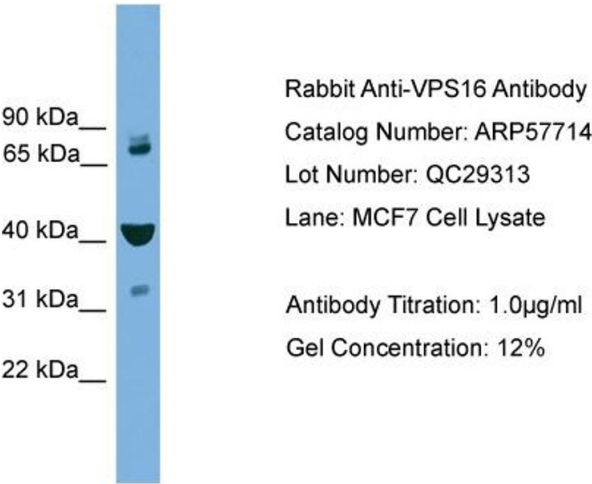
Handling Advice:	Avoid repeated freeze-thaw cycles.
------------------	------------------------------------

Storage:	-20 °C
----------	--------

Handling

Storage Comment: For short term use, store at 2-8°C up to 1 week. For long term storage, store at -20°C in small aliquots to prevent freeze-thaw cycles.

Images

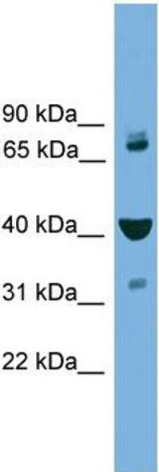


**Western Blotting**

**Image 1.** WB Suggested Anti-VPS16

Antibody Titration: 0.2-1 µg/mL

Positive Control: MCF7 cell lysate



**Western Blotting**

**Image 2. WB Suggested Anti-VPS16 Antibody Titration:**

0.2-1 ug/ml

**Positive Control:** MCF7 cell lysate