

Datasheet for ABIN2787369
anti-PYCR1 antibody (Middle Region)[Go to Product page](#)

3 Images

Overview

Quantity:	100 µL
Target:	PYCR1
Binding Specificity:	Middle Region
Reactivity:	Human, Mouse, Rat, Zebrafish (Danio rerio), Rabbit, Cow, Dog, Guinea Pig, Horse
Host:	Rabbit
Clonality:	Polyclonal
Conjugate:	This PYCR1 antibody is un-conjugated
Application:	Western Blotting (WB)

Product Details

Immunogen:	The immunogen is a synthetic peptide directed towards the middle region of human PYCR1
Sequence:	KMLLHSEQHP GQLKDNVSSP GGATIHAIHV LESGGFRSLL INAVEASCIR
Predicted Reactivity:	Cow: 100%, Dog: 100%, Guinea Pig: 100%, Horse: 100%, Human: 100%, Mouse: 92%, Rabbit: 100%, Rat: 100%, Zebrafish: 100%
Characteristics:	This is a rabbit polyclonal antibody against PYCR1. It was validated on Western Blot using a cell lysate as a positive control.
Purification:	Affinity Purified

Target Details

Target:	PYCR1
---------	-------

Target Details

Alternative Name:	PYCR1 (PYCR1 Products)
Background:	<p>This gene encodes an enzyme that catalyzes the NAD(P)H-dependent conversion of pyrroline-5-carboxylate to proline. This enzyme may also play a physiologic role in the generation of NADP(+) in some cell types. The protein forms a homopolymer and localizes</p> <p>Alias Symbols: P5C, P5CR, PIG45, PP222, PYCR, PRO3, ARCL2B, ARCL3B</p> <p>Protein Interaction Partner: FUS, SUMO2, NEDD8, MDM2, SUZ12, RNF2, BMI1, HNRNPD, BAG3, BNIPL, UBC, ITGA4, DAB2, MDC1, CUL3, NUDT21, CDK2AP2,</p> <p>Protein Size: 316</p>
Molecular Weight:	33 kDa
Gene ID:	5831
NCBI Accession:	NM_153824 , NP_722546
UniProt:	A6NFM2

Application Details

Application Notes:	Optimal working dilutions should be determined experimentally by the investigator.
Comment:	Antigen size: 316 AA
Restrictions:	For Research Use only

Handling

Format:	Liquid
Concentration:	Lot specific
Buffer:	Liquid. Purified antibody supplied in 1x PBS buffer with 0.09 % (w/v) sodium azide and 2 % sucrose.
Preservative:	Sodium azide
Precaution of Use:	This product contains Sodium azide: a POISONOUS AND HAZARDOUS SUBSTANCE which should be handled by trained staff only.
Handling Advice:	Avoid repeated freeze-thaw cycles.
Storage:	-20 °C
Storage Comment:	For short term use, store at 2-8°C up to 1 week. For long term storage, store at -20°C in small aliquots to prevent freeze-thaw cycles.

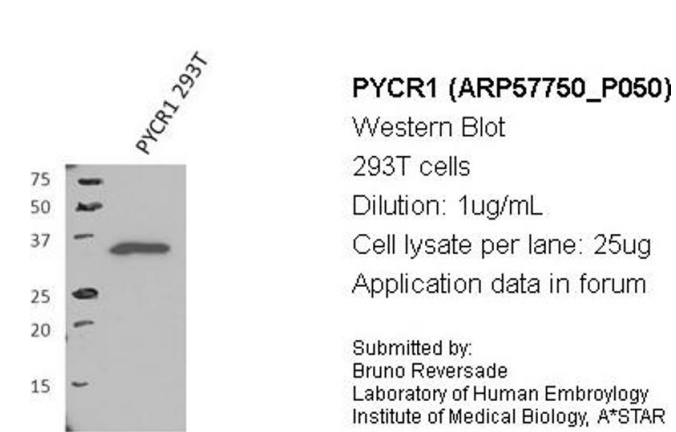


Image 1.



Western Blotting

Image 2. WB Suggested Anti-PYCR1

Antibody Titration: 0.2-1 µg/mL ELISA Titer: 1:1562500

Positive Control: HepG2 cell lysate

PYCR1 is supported by BioGPS gene expression data to be expressed in HepG2

Western Blotting

Image 3. WB Suggested Anti-PYCR1 Antibody Titration:

0.2-1 ug/ml

ELISA Titer: 1:1562500

Positive Control: HepG2 cell lysate