

Datasheet for ABIN2787373

anti-MAGEB1 antibody (Middle Region)[Go to Product page](#)**1** Image

Overview

Quantity:	100 µL
Target:	MAGEB1
Binding Specificity:	Middle Region
Reactivity:	Human, Mouse, Dog, Rabbit, Horse, Rat, Cow, Guinea Pig
Host:	Rabbit
Clonality:	Polyclonal
Conjugate:	This MAGEB1 antibody is un-conjugated
Application:	Western Blotting (WB)

Product Details

Immunogen:	The immunogen is a synthetic peptide directed towards the middle region of human MAGEB1
Sequence:	QEKYLKYEQV PNSDPPRYQF LWGPARYAET TKMKVLEFLA KMNGATPRDF
Predicted Reactivity:	Cow: 77%, Dog: 77%, Guinea Pig: 82%, Horse: 92%, Human: 100%, Mouse: 85%, Rabbit: 92%, Rat: 82%
Characteristics:	This is a rabbit polyclonal antibody against MAGEB1. It was validated on Western Blot using a cell lysate as a positive control.
Purification:	Affinity Purified

Target Details

Target:	MAGEB1
---------	--------

Target Details

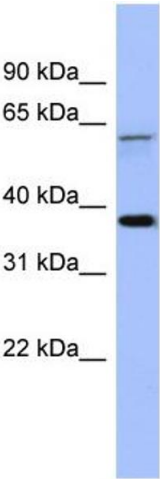
Alternative Name:	MAGEB1 (MAGEB1 Products)
Background:	<p>This gene is a member of the MAGEB gene family. The members of this family have their entire coding sequences located in the last exon, and the encoded proteins show 50 to 68 % sequence identity to each other. The promoters and first exons of the MAGEB gen</p> <p>Alias Symbols: DAM10, MAGE-Xp, MAGEL1, MGC9322, CT3.1</p> <p>Protein Interaction Partner: SRPK2, SRPK1, EID3, EID2, NSMCE4A, UBC, NEDD4L,</p> <p>Protein Size: 347</p>
Molecular Weight:	39 kDa
Gene ID:	4112
NCBI Accession:	NM_177415 , NP_803134
UniProt:	P43366

Application Details

Application Notes:	Optimal working dilutions should be determined experimentally by the investigator.
Comment:	Antigen size: 347 AA
Restrictions:	For Research Use only

Handling

Format:	Liquid
Concentration:	Lot specific
Buffer:	Liquid. Purified antibody supplied in 1x PBS buffer with 0.09 % (w/v) sodium azide and 2 % sucrose.
Preservative:	Sodium azide
Precaution of Use:	This product contains Sodium azide: a POISONOUS AND HAZARDOUS SUBSTANCE which should be handled by trained staff only.
Handling Advice:	Avoid repeated freeze-thaw cycles.
Storage:	-20 °C
Storage Comment:	For short term use, store at 2-8°C up to 1 week. For long term storage, store at -20°C in small aliquots to prevent freeze-thaw cycles.



Western Blotting

Image 1. WB Suggested Anti-MAGEB1 Antibody Titration:

0.2-1 ug/ml

ELISA Titer: 1:1562500

Positive Control: Human brain