

Datasheet for ABIN2787381  
**anti-MRPL47 antibody (Middle Region)**[Go to Product page](#)

## 1 Image

## Overview

Quantity:	100 µL
Target:	MRPL47
Binding Specificity:	Middle Region
Reactivity:	Human, Mouse, Rat, Cow, Guinea Pig, Horse, Rabbit, Zebrafish (Danio rerio), Dog, Saccharomyces cerevisiae
Host:	Rabbit
Clonality:	Polyclonal
Conjugate:	This MRPL47 antibody is un-conjugated
Application:	Western Blotting (WB)

## Product Details

Immunogen:	The immunogen is a synthetic peptide directed towards the middle region of human MRPL47
Sequence:	VVQEREDALR LLQTGQERAR PGAWRRDIFG RIIWHKFKQW VIPWHLNKRY
Predicted Reactivity:	Cow: 100%, Dog: 100%, Guinea Pig: 100%, Horse: 100%, Human: 100%, Mouse: 100%, Rabbit: 100%, Rat: 100%, Yeast: 100%, Zebrafish: 100%
Characteristics:	This is a rabbit polyclonal antibody against MRPL47. It was validated on Western Blot using a cell lysate as a positive control.
Purification:	Affinity Purified

## Target Details

Target:	MRPL47
---------	--------

## Target Details

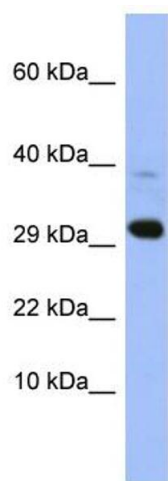
Alternative Name:	MRPL47 ( <a href="#">MRPL47 Products</a> )
Background:	<p>Mammalian mitochondrial ribosomal proteins are encoded by nuclear genes and help in protein synthesis within the mitochondrion. Mitochondrial ribosomes (mitoribosomes) consist of a small 28S subunit and a large 39S subunit. They have an estimated 75 % prot</p> <p>Alias Symbols: CGI-204, MGC45403, NCM1, L47mt, MRP-L47</p> <p>Protein Interaction Partner: GRSF1, UBC, MRPL43, MRPL45, CLPTM1L, MRPL44, TSR1, MRPL50, LAMTOR3, ACTA2, Ybx1, ICT1,</p> <p>Protein Size: 140</p>
Molecular Weight:	17 kDa
Gene ID:	57129
NCBI Accession:	<a href="#">NM_177988</a> , <a href="#">NP_817125</a>

## Application Details

Application Notes:	Optimal working dilutions should be determined experimentally by the investigator.
Comment:	Antigen size: 140 AA
Restrictions:	For Research Use only

## Handling

Format:	Liquid
Concentration:	Lot specific
Buffer:	Liquid. Purified antibody supplied in 1x PBS buffer with 0.09 % (w/v) sodium azide and 2 % sucrose.
Preservative:	Sodium azide
Precaution of Use:	This product contains Sodium azide: a POISONOUS AND HAZARDOUS SUBSTANCE which should be handled by trained staff only.
Handling Advice:	Avoid repeated freeze-thaw cycles.
Storage:	-20 °C
Storage Comment:	For short term use, store at 2-8°C up to 1 week. For long term storage, store at -20°C in small aliquots to prevent freeze-thaw cycles.



Western Blotting

**Image 1. WB Suggested Anti-MRPL47 Antibody Titration:**

0.2-1 ug/ml

**ELISA Titer:** 1:62500

**Positive Control:** HepG2 cell lysate