

Datasheet for ABIN2787391  
**anti-ORC4 antibody (Middle Region)**



[Go to Product page](#)

1 Image

## Overview

Quantity:	100 µL
Target:	ORC4
Binding Specificity:	Middle Region
Reactivity:	Human, Mouse, Rat, Cow, Dog, Horse, Rabbit, Guinea Pig
Host:	Rabbit
Clonality:	Polyclonal
Conjugate:	This ORC4 antibody is un-conjugated
Application:	Western Blotting (WB)

## Product Details

Immunogen:	The immunogen is a synthetic peptide directed towards the middle region of human ORC4L
Sequence:	VLEICLIAM KHLNDIYEEE PFNFQMVYNE FQKFVQRKAH SVYNFEKPVV
Predicted Reactivity:	Cow: 100%, Dog: 100%, Guinea Pig: 100%, Horse: 100%, Human: 100%, Mouse: 100%, Rabbit: 100%, Rat: 100%, Zebrafish: 79%
Characteristics:	This is a rabbit polyclonal antibody against ORC4L. It was validated on Western Blot using a cell lysate as a positive control.
Purification:	Affinity Purified

## Target Details

Target:	ORC4
---------	------

## Target Details

Alternative Name:	ORC4L ( <a href="#">ORC4 Products</a> )
Background:	<p>The origin recognition complex (ORC) is a highly conserved six subunit protein complex essential for the initiation of the DNA replication in eukaryotic cells. Studies in yeast demonstrated that ORC binds specifically to origins of replication and serves</p> <p>Alias Symbols: ORC4, ORC4P, ORC4L</p> <p>Protein Interaction Partner: RRM2B, TCF4, MCM3, MTUS1, MCM10, FBXL8, FBXO6, FBXO25, FBXL5, ORC3, ORC6, UBC, ORC5, ORC2, MLH1, MCM7, KPNA1, CTBP1, CDKN2A, CCND1, APP, XRCC5, XRCC6, CCL2, tat, MCM2, ORC1, MCM6, MCM4, DBF4, RPA2,</p> <p>Protein Size: 436</p>
Molecular Weight:	50 kDa
Gene ID:	5000
NCBI Accession:	<a href="#">NM_181741</a> , <a href="#">NP_859525</a>
UniProt:	<a href="#">O43929</a>
Pathways:	<a href="#">Mitotic G1-G1/S Phases</a> , <a href="#">DNA Replication</a> , <a href="#">Synthesis of DNA</a>

## Application Details

Application Notes:	Optimal working dilutions should be determined experimentally by the investigator.
Comment:	Antigen size: 436 AA
Restrictions:	For Research Use only

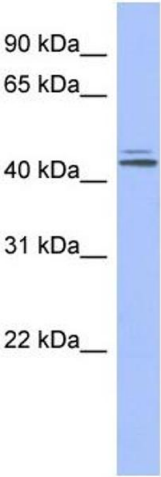
## Handling

Format:	Liquid
Concentration:	Lot specific
Buffer:	Liquid. Purified antibody supplied in 1x PBS buffer with 0.09 % (w/v) sodium azide and 2 % sucrose.
Preservative:	Sodium azide
Precaution of Use:	This product contains Sodium azide: a POISONOUS AND HAZARDOUS SUBSTANCE which should be handled by trained staff only.
Handling Advice:	Avoid repeated freeze-thaw cycles.
Storage:	-20 °C

Handling

Storage Comment: For short term use, store at 2-8°C up to 1 week. For long term storage, store at -20°C in small aliquots to prevent freeze-thaw cycles.

Images



Western Blotting

Image 1. WB Suggested Anti-ORC4L Antibody Titration:

0.2-1 ug/ml

**ELISA Titer:** 1:1562500

**Positive Control:** Human Liver