

Datasheet for ABIN2787392  
**anti-PPP2R2C antibody (N-Term)**[Go to Product page](#)

## 2 Images

## Overview

Quantity:	100 µL
Target:	PPP2R2C
Binding Specificity:	N-Term
Reactivity:	Human, Mouse, Rat, Cow, Dog, Guinea Pig, Horse, Rabbit
Host:	Rabbit
Clonality:	Polyclonal
Conjugate:	This PPP2R2C antibody is un-conjugated
Application:	Western Blotting (WB)

## Product Details

Immunogen:	The immunogen is a synthetic peptide corresponding to a region of Mouse
Sequence:	VTEADVISTV EFNHTGELLA TGDKGGRVVI FQREPESKNA PHSQGEYDVY
Predicted Reactivity:	Cow: 100%, Dog: 100%, Guinea Pig: 100%, Horse: 100%, Human: 100%, Mouse: 100%, Rabbit: 100%, Rat: 100%
Characteristics:	This is a rabbit polyclonal antibody against Ppp2r2c. It was validated on Western Blot.
Purification:	Affinity Purified

## Target Details

Target:	PPP2R2C
Alternative Name:	Ppp2r2c ( <a href="#">PPP2R2C Products</a> )

## Target Details

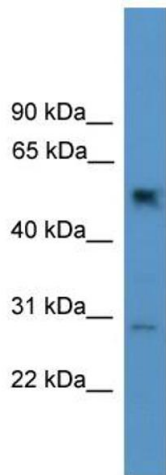
Background:	The B regulatory subunit might modulate substrate selectivity and catalytic activity, and also might direct the localization of the catalytic enzyme to a particular subcellular compartment. Alias Symbols: 6330548006Rik, IMYPNO, IMYPNO1, PR52 Protein Size: 447
Molecular Weight:	49 kDa
Gene ID:	269643
NCBI Accession:	<a href="#">NM_172994</a> , <a href="#">NP_766582</a>
UniProt:	<a href="#">Q9Y2T4</a>
Pathways:	<a href="#">PI3K-Akt Signaling</a> , <a href="#">Hepatitis C</a>

## Application Details

Application Notes:	Optimal working dilutions should be determined experimentally by the investigator.
Comment:	Antigen size: 447 AA
Restrictions:	For Research Use only

## Handling

Format:	Liquid
Concentration:	Lot specific
Buffer:	Liquid. Purified antibody supplied in 1x PBS buffer with 0.09 % (w/v) sodium azide and 2 % sucrose.
Preservative:	Sodium azide
Precaution of Use:	This product contains Sodium azide: a POISONOUS AND HAZARDOUS SUBSTANCE which should be handled by trained staff only.
Handling Advice:	Avoid repeated freeze-thaw cycles.
Storage:	-20 °C
Storage Comment:	For short term use, store at 2-8°C up to 1 week. For long term storage, store at -20°C in small aliquots to prevent freeze-thaw cycles.



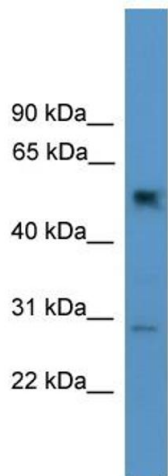
Western Blotting

**Image 1. WB Suggested Anti-Ppp2r2c Antibody Titration:**

0.2-1 ug/ml

**ELISA Titer:** 1:312500

**Positive Control:** Mouse Lung



Rabbit Anti-Ppp2r2c Antibody  
Catalog Number: ARP57784  
Lot Number: QC29374  
Lane: Mouse Lung Lysate

Antibody Titration: 1.0µg/ml  
Gel Concentration: 12%

Western Blotting

**Image 2. WB Suggested Anti-Ppp2r2c**

Antibody Titration: 0.2-1 µg/mL ELISA Titer: 1::12500

Positive Control: Mouse Lung