

Datasheet for ABIN2787394
anti-PKM2 antibody (Middle Region)

3 Images



[Go to Product page](#)

Overview

Quantity:	100 µL
Target:	PKM2
Binding Specificity:	Middle Region
Reactivity:	Human, Mouse, Rat, Rabbit, Cow, Dog, Guinea Pig, Horse, Saccharomyces cerevisiae, Sheep, Zebrafish (Danio rerio)
Host:	Rabbit
Clonality:	Polyclonal
Conjugate:	This PKM2 antibody is un-conjugated
Application:	Western Blotting (WB)

Product Details

Immunogen:	The immunogen is a synthetic peptide directed towards the middle region of human PKM2
Sequence:	HLQLFEELRR LAPITSDPTE ATAVGAVEAS FKCCSGAIIV LTKSGRSAHQ
Predicted Reactivity:	Cow: 93%, Dog: 93%, Guinea Pig: 100%, Horse: 93%, Human: 100%, Mouse: 100%, Rabbit: 93%, Rat: 100%, Sheep: 77%, Yeast: 85%, Zebrafish: 93%
Characteristics:	This is a rabbit polyclonal antibody against PKM2. It was validated on Western Blot.
Purification:	Affinity Purified

Target Details

Target:	PKM2
---------	------

Target Details

Alternative Name:	PKM2 (PKM2 Products)
Background:	<p>This gene encodes a protein involved in glycolysis. The encoded protein is a pyruvate kinase that catalyzes the transfer of a phosphoryl group from phosphoenolpyruvate to ADP, generating ATP and pyruvate. This protein has been shown to interact with thyroid hormone and may mediate cellular metabolic effects induced by thyroid hormones. This protein has been found to bind Opa protein, a bacterial outer membrane protein involved in gonococcal adherence to and invasion of human cells, suggesting a role of this protein in bacterial pathogenesis. Three alternatively spliced transcript variants encoding two distinct isoforms have been reported.</p> <p>Alias Symbols: CTHBP, MGC3932, OIP3, PK3, PKM, TCB, THBP1, PKM2</p> <p>Protein Interaction Partner: LNX1, NXT2, HUWE1, ISG15, UBC, POLE2, FUS, SUMO2, SUMO3, STAU1, MDM2, SUZ12, EZH2, IPO11, TWF2, PDLIM5, NPLOC4, PLIN3, UBA2, EIF4A3, ANP32A, SRP14, RAD23B, PPP1CA, PIN1, CTPS1, CBS, CAPZA2, ACAT2, NLK, FBXO6, YWHAQ, RAF1, IGSF8, HDAC6, MAPK7, NPM1, CDK2,</p> <p>Protein Size: 531</p>
Molecular Weight:	58 kDa
Gene ID:	5315
NCBI Accession:	NM_002654 , NP_002645
UniProt:	P11980
Pathways:	Warburg Effect

Application Details

Application Notes:	Optimal working dilutions should be determined experimentally by the investigator.
Comment:	Antigen size: 531 AA
Restrictions:	For Research Use only

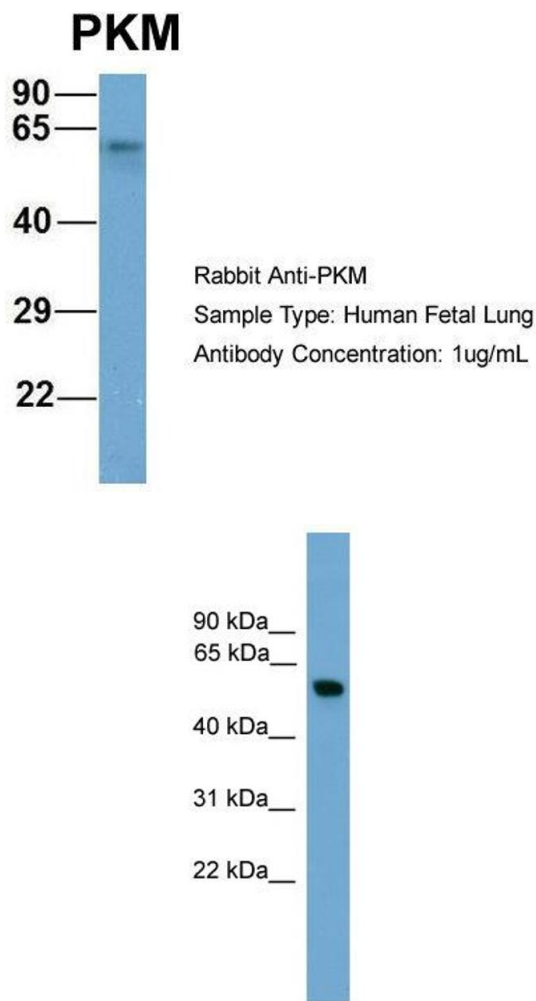
Handling

Format:	Liquid
Concentration:	Lot specific
Buffer:	Liquid. Purified antibody supplied in 1x PBS buffer with 0.09 % (w/v) sodium azide and 2 % sucrose.
Preservative:	Sodium azide

Handling

Precaution of Use:	This product contains Sodium azide: a POISONOUS AND HAZARDOUS SUBSTANCE which should be handled by trained staff only.
Handling Advice:	Avoid repeated freeze-thaw cycles.
Storage:	-20 °C
Storage Comment:	For short term use, store at 2-8°C up to 1 week. For long term storage, store at -20°C in small aliquots to prevent freeze-thaw cycles.

Images

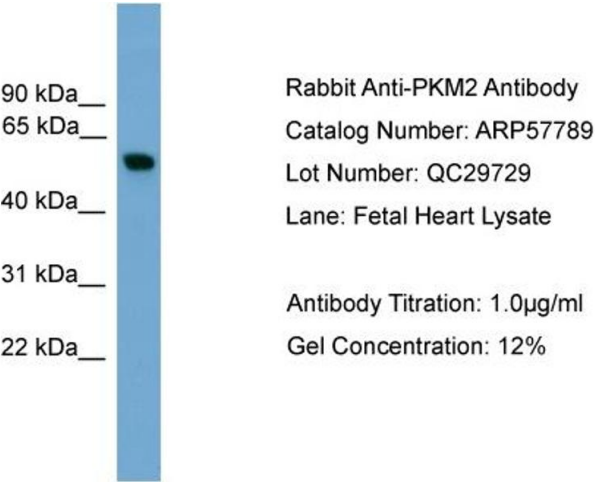


Western Blotting

Image 1. Host: Rabbit
Target Name: PKM
Sample Tissue: Human Fetal Lung
Antibody Dilution: 1.0 µg/mL

Western Blotting

Image 2. WB Suggested Anti-PKM2 Antibody Titration:
0.2-1 ug/ml
ELISA Titer: 1:312500
Positive Control: Human heart



Western Blotting

Image 3. WB Suggested Anti-PKM2

Antibody Titration: 0.2-1 µg/mL ELISA Titer: 1::12500

Positive Control: Human heart