



Datasheet for ABIN2787398  
**anti-RAC1 antibody (Middle Region)**



[Go to Product page](#)

3 Images

Overview

Quantity:	100 µL
Target:	RAC1
Binding Specificity:	Middle Region
Reactivity:	Human, Mouse, Rat, Dog, Zebrafish (Danio rerio), Sheep, Rabbit, Horse, Cow, Guinea Pig
Host:	Rabbit
Clonality:	Polyclonal
Conjugate:	This RAC1 antibody is un-conjugated
Application:	Western Blotting (WB)

Product Details

Immunogen:	The immunogen is a synthetic peptide directed towards the middle region of human RAC1
Sequence:	LMAKEIGAV KYLECSALTQ RGLKTVFDEA IRAVLCPPPV KKRKRKCLLL
Predicted Reactivity:	Cow: 100%, Dog: 100%, Guinea Pig: 100%, Horse: 100%, Human: 100%, Mouse: 100%, Rabbit: 100%, Rat: 100%, Sheep: 100%, Zebrafish: 100%
Characteristics:	This is a rabbit polyclonal antibody against RAC1. It was validated on Western Blot.
Purification:	Affinity Purified

Target Details

Target:	RAC1
Abstract:	<a href="#">RAC1 Products</a>

## Target Details

---

**Background:** The protein encoded by this gene is a GTPase which belongs to the RAS superfamily of small GTP-binding proteins. Members of this superfamily appear to regulate a diverse array of cellular events, including the control of cell growth, cytoskeletal reorganization, and the activation of protein kinases. Two transcript variants encoding different isoforms have been found for this gene.

Alias Symbols: MGC111543, MIG5, TC-25, p21-Rac1, Rac-1

Protein Interaction Partner: PAK3, NCF2, KRT40, LZTS2, PAK6, C1QA, RHOB, XIAP, BIRC2, UBC, CDC23, USH1C, TRIO, srgp-1, EED, PRMT6, HACE1, NOXA1, ARFIP2, ITGA4, GRN, FN1, BRINP1, DIAPH3, BAIAP2, LTBP4, VWF, VCAM1, MTNR1A, COX3, LTBP3, CHN2, IGBP1, CLNS1A, PSAT1, Htt, PAK1, LRRK2, SH3R

Protein Size: 192

---

**Molecular Weight:** 21 kDa

---

**Gene ID:** 5879

---

**NCBI Accession:** [NM\\_006908](#), [NP\\_008839](#)

---

**UniProt:** [P60763](#)

---

**Pathways:** [WNT Signaling](#), [Regulation of Actin Filament Polymerization](#), [Cell-Cell Junction Organization](#), [Thromboxane A2 Receptor Signaling](#), [VEGF Signaling](#)

## Application Details

---

**Application Notes:** Optimal working dilutions should be determined experimentally by the investigator.

---

**Comment:** Antigen size: 192 AA

---

**Restrictions:** For Research Use only

## Handling

---

**Format:** Liquid

---

**Concentration:** Lot specific

---

**Buffer:** Liquid. Purified antibody supplied in 1x PBS buffer with 0.09 % (w/v) sodium azide and 2 % sucrose.

---

**Preservative:** Sodium azide

---

**Precaution of Use:** This product contains Sodium azide: a POISONOUS AND HAZARDOUS SUBSTANCE which should be handled by trained staff only.

---

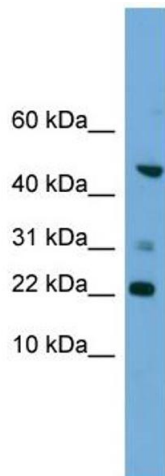
## Handling

Handling Advice: Avoid repeated freeze-thaw cycles.

Storage: -20 °C

Storage Comment: For short term use, store at 2-8°C up to 1 week. For long term storage, store at -20°C in small aliquots to prevent freeze-thaw cycles.

## Images

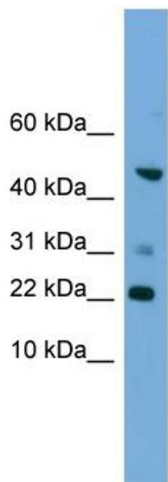


### Western Blotting

#### Image 1. WB Suggested Anti-RAC1 Antibody Titration:

0.2-1 ug/ml

**Positive Control:** HepG2 cell lysate



Rabbit Anti-RAC1 Antibody  
Catalog Number: ARP57798  
Lot Number: QC29382  
Lane: HepG2 Cell Lysate

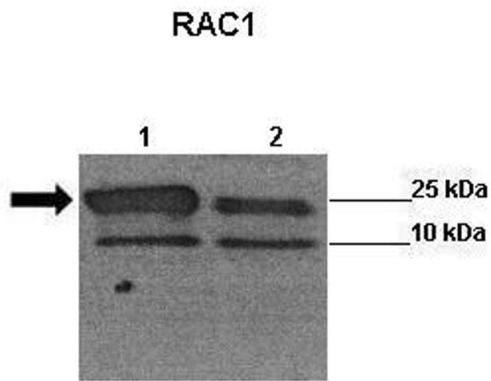
Antibody Titration: 1.0µg/ml  
Gel Concentration: 10-20%

### Western Blotting

#### Image 2. WB Suggested Anti-RAC1

Antibody Titration: 0.2-1 µg/mL

Positive Control: HepG2 cell lysate



### Western Blotting

**Image 3.** Sample Type: Lane 1: 241  $\mu$ g siRUVBL1 transfected human H1299 cells Lane 2: 041  $\mu$ g untransfected human H1299 cells

Primary Antibody Dilution: 1:0000

Secondary Antibody: Anti-rabbit-HRP

Secondary Antibody Dilution: 1:0000 Color/Signal

Descriptions: RAC1

Gene Name: Wenwei Hu, Xuetian Yue, Rutgers Cancer Institute of New Jersey.

Submitted by: