

Datasheet for ABIN2787399

## anti-SERPINB8 antibody (Middle Region)



[Go to Product page](#)

### 1 Image

#### Overview

Quantity:	100 µL
Target:	SERPINB8
Binding Specificity:	Middle Region
Reactivity:	Human, Mouse, Rat, Rabbit, Dog, Horse, Cow, Pig, Guinea Pig, Sheep
Host:	Rabbit
Clonality:	Polyclonal
Conjugate:	This SERPINB8 antibody is un-conjugated
Application:	Western Blotting (WB)

#### Product Details

Immunogen:	The immunogen is a synthetic peptide directed towards the middle region of human SERPINB8
Sequence:	KAWTNSEKLT KSKVQVFLPR LKLEESYDLE PFLRRLGMID AFDEAKADFS
Predicted Reactivity:	Cow: 91%, Dog: 92%, Guinea Pig: 83%, Horse: 92%, Human: 100%, Mouse: 100%, Pig: 92%, Rabbit: 86%, Rat: 100%, Sheep: 91%
Characteristics:	This is a rabbit polyclonal antibody against SERPINB8. It was validated on Western Blot.
Purification:	Affinity Purified

#### Target Details

Target:	SERPINB8
Alternative Name:	SERPINB8 ( <a href="#">SERPINB8 Products</a> )

## Target Details

Background:	<p>The superfamily of high molecular weight serine proteinase inhibitors (serpins) regulate a diverse set of intracellular and extracellular processes such as complement activation, fibrinolysis, coagulation, cellular differentiation, tumor suppression, apoptosis, and cell migration. Serpins are characterized by well-conserved a tertiary structure that consists of 3 beta sheets and 8 or 9 alpha helices (Huber and Carrell, 1989 [PubMed 2690952]). A critical portion of the molecule, the reactive center loop connects beta sheets A and C. Protease inhibitor-8 (PI8, SERPINB8) is a member of the ov-serpin subfamily, which, relative to the archetypal serpin PI1 (MIM 107400), is characterized by a high degree of homology to chicken ovalbumin, lack of N- and C-terminal extensions, absence of a signal peptide, and a serine rather than an asparagine residue at the penultimate position (summary by Bartuski et al., 1997 [PubMed 9268635]).</p> <p>Alias Symbols: CAP2, PI8</p> <p>Protein Interaction Partner: SUMO2, LARS, UBC, CAP1, PRSS1, F10, F2, FURIN, BCL2,</p> <p>Protein Size: 374</p>
-------------	---

Molecular Weight:	43 kDa
-------------------	--------

Gene ID:	5271
----------	------

NCBI Accession:	<a href="#">NM_198833</a> , <a href="#">NP_942130</a>
-----------------	---

UniProt:	<a href="#">P50452</a>
----------	------------------------

## Application Details

Application Notes:	Optimal working dilutions should be determined experimentally by the investigator.
--------------------	--

Comment:	Antigen size: 374 AA
----------	----------------------

Restrictions:	For Research Use only
---------------	-----------------------

## Handling

Format:	Liquid
---------	--------

Concentration:	Lot specific
----------------	--------------

Buffer:	Liquid. Purified antibody supplied in 1x PBS buffer with 0.09 % (w/v) sodium azide and 2 % sucrose.
---------	---

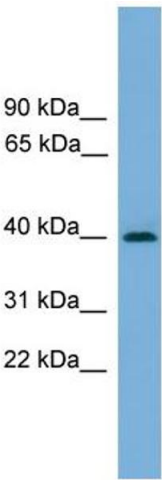
Preservative:	Sodium azide
---------------	--------------

Precaution of Use:	This product contains Sodium azide: a POISONOUS AND HAZARDOUS SUBSTANCE which
--------------------	---

Handling

	should be handled by trained staff only.
Handling Advice:	Avoid repeated freeze-thaw cycles.
Storage:	-20 °C
Storage Comment:	For short term use, store at 2-8°C up to 1 week. For long term storage, store at -20°C in small aliquots to prevent freeze-thaw cycles.

Images



**Western Blotting**

**Image 1.** WB Suggested Anti-SERPINB8 Antibody Titration: 0.2-1 ug/ml ELISA Titer: 1:312500 Positive Control: MCF7 cell lysate