

Datasheet for ABIN2787402
anti-FAM212B antibody (Middle Region)[Go to Product page](#)

2 Images

Overview

Quantity:	100 µL
Target:	FAM212B
Binding Specificity:	Middle Region
Reactivity:	Human, Guinea Pig
Host:	Rabbit
Clonality:	Polyclonal
Conjugate:	This FAM212B antibody is un-conjugated
Application:	Western Blotting (WB)

Product Details

Immunogen:	The immunogen is a synthetic peptide directed towards the middle region of human C1orf183
Sequence:	GDNVFADLVG NWLDLPELEK GGEKGETGGA REPKGEKGQP QELGRRFALT
Predicted Reactivity:	Guinea Pig: 86%, Human: 100%
Characteristics:	This is a rabbit polyclonal antibody against C1orf183. It was validated on Western Blot.
Purification:	Affinity Purified

Target Details

Target:	FAM212B
Alternative Name:	C1orf183 (FAM212B Products)
Background:	The function of this protein remains unknown.

Target Details

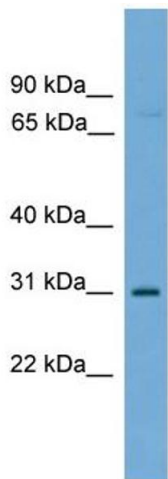
	Alias Symbols: FLJ31105, C1orf183 Protein Interaction Partner: APP, LNX1, Protein Size: 382
Molecular Weight:	31 kDa
Gene ID:	55924
NCBI Accession:	NM_198926 , NP_945120
UniProt:	Q9NTI7

Application Details

Application Notes:	Optimal working dilutions should be determined experimentally by the investigator.
Comment:	Antigen size: 382 AA
Restrictions:	For Research Use only

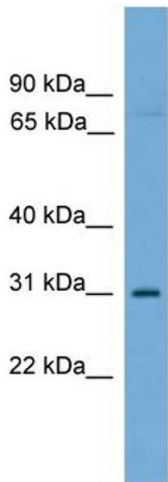
Handling

Format:	Liquid
Concentration:	Lot specific
Buffer:	Liquid. Purified antibody supplied in 1x PBS buffer with 0.09 % (w/v) sodium azide and 2 % sucrose.
Preservative:	Sodium azide
Precaution of Use:	This product contains Sodium azide: a POISONOUS AND HAZARDOUS SUBSTANCE which should be handled by trained staff only.
Handling Advice:	Avoid repeated freeze-thaw cycles.
Storage:	-20 °C
Storage Comment:	For short term use, store at 2-8°C up to 1 week. For long term storage, store at -20°C in small aliquots to prevent freeze-thaw cycles.



Western Blotting

Image 1. WB Suggested Anti-C1orf183 Antibody Titration:
0.2-1 ug/ml
Positive Control: MCF7 cell lysate



Rabbit Anti-C1orf183 Antibody
Catalog Number: ARP57804
Lot Number: QC29385
Lane: MCF7 Cell Lysate

Antibody Titration: 1.0µg/ml
Gel Concentration: 12%

Western Blotting

Image 2. WB Suggested Anti-C1orf183
Antibody Titration: 0.2-1 µg/mL
Positive Control: MCF7 cell lysate