

Datasheet for ABIN2787405
anti-THEG antibody (Middle Region)

2 Images

[Go to Product page](#)

Overview

| | |
|----------------------|--|
| Quantity: | 100 µL |
| Target: | THEG |
| Binding Specificity: | Middle Region |
| Reactivity: | Human, Cow, Dog, Guinea Pig, Mouse, Rat, Pig |
| Host: | Rabbit |
| Clonality: | Polyclonal |
| Conjugate: | This THEG antibody is un-conjugated |
| Application: | Western Blotting (WB) |

Product Details

| | |
|-----------------------|---|
| Immunogen: | The immunogen is a synthetic peptide directed towards the middle region of human THEG |
| Sequence: | DRPSVYWTER FLEDTTLTIT VPAVSRRVEE LSRPKRFYLE YNNNRRTTPV |
| Predicted Reactivity: | Cow: 86%, Dog: 86%, Guinea Pig: 85%, Human: 100%, Mouse: 93%, Pig: 86%, Rat: 93% |
| Characteristics: | This is a rabbit polyclonal antibody against THEG. It was validated on Western Blot. |
| Purification: | Affinity Purified |

Target Details

| | |
|-------------------|---|
| Target: | THEG |
| Alternative Name: | THEG (THEG Products) |
| Background: | This gene is specifically expressed in the nucleus of haploid male germ cells. It encodes a |

Target Details

protein that may be involved in the regulation of germ cell nuclear functions. Alternatively spliced transcript variants encoding distinct isoforms have been reported.

Alias Symbols: CT56, MGC26138, THEG1

Protein Interaction Partner: MDFI, CCT5,

Protein Size: 355

Molecular Weight: 41 kDa

Gene ID: 51298

NCBI Accession: [NM_199202](#), [NP_954672](#)

Application Details

Application Notes: Optimal working dilutions should be determined experimentally by the investigator.

Comment: Antigen size: 355 AA

Restrictions: For Research Use only

Handling

Format: Liquid

Concentration: Lot specific

Buffer: Liquid. Purified antibody supplied in 1x PBS buffer with 0.09 % (w/v) sodium azide and 2 % sucrose.

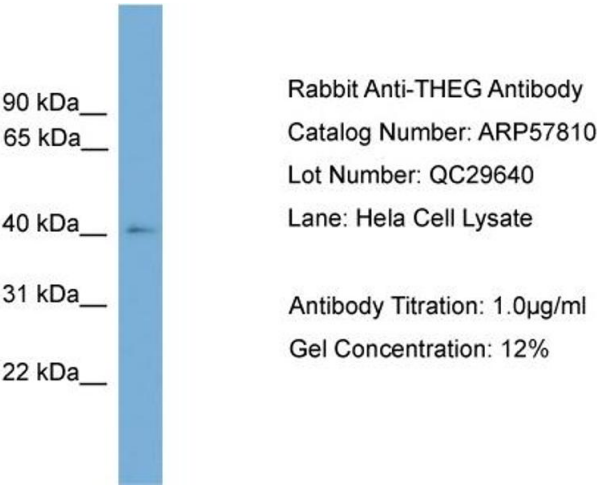
Preservative: Sodium azide

Precaution of Use: This product contains Sodium azide: a POISONOUS AND HAZARDOUS SUBSTANCE which should be handled by trained staff only.

Handling Advice: Avoid repeated freeze-thaw cycles.

Storage: -20 °C

Storage Comment: For short term use, store at 2-8°C up to 1 week. For long term storage, store at -20°C in small aliquots to prevent freeze-thaw cycles.

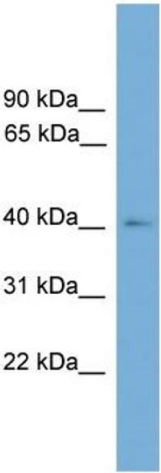


Western Blotting

Image 1. WB Suggested Anti-THEG

Antibody Titration: 0.2-1 µg/mL ELISA Titer: 1:.

Positive Control: Hela cell lysate



Western Blotting

Image 2. WB Suggested Anti-THEG Antibody Titration:

0.2-1 ug/ml

ELISA Titer: 1:0

Positive Control: Hela cell lysate